

# PAWA Newsletter

August/September 2017



# **PRINTMAKERS' ASSOCIATION OF WESTERN AUSTRALIA**

PAWA is a not for profit organization for printmakers in Western Australia.

Our committee is made up of PAWA members who volunteer their time and expertise.

## **PATRON**

LEON PERICLES

## **COMMITTEE 2017**

### **PRESIDENT**

ELIZABETH MORRISON

### **TREASURER**

MICHELLE WELLS

### **SECRETARY**

CLARE MCCARTHY

### **MINUTES SECRETARY**

HILDA KLAP

### **OFFICE CO-ORDINATORS**

ROSEMARY MOSTYN  
BETH PORTER

### **GENERAL COMMITTEE**

SHELLEY COWPER  
MONIQUE BOSSHARD-CURBY  
PETRA SARA

### **CONSULTANT**

DALLAS PERRY

**WWW.PAWA.ORG.AU**

## **CONTENTS:**

PAWA Committee, 2  
PAWA members' information, 2-3  
Housekeeping notes, 4  
Hand Print Exhibition, 5  
Studio Notes, 6  
Japanese Papers, 7  
PAWA Skill Share Saturdays, 8  
Artist Opportunities, 9-10  
Exhibitions, 11-12  
PAWA Print Collection, 13  
Workshops, 14-18  
AGM notice and nominations form, 19-20  
Membership form, 21  
Thank you to our sponsors, 22

## **COVER PHOTOS:**

Leon Pericles, PAWA Patron and his wife Moira viewing Hand Print PAWA Members Exhibition 2017 at Atwell Gallery in July (*upper*); Prints by Guundie Kuchling, Bethwyn Porter and Hilda Klap (*middle*); Don Neander playing at the exhibition opening 16 July 2017 (*lower*).

## **CONTACT DETAILS:**

Email: [admin@pawa.org.au](mailto:admin@pawa.org.au)

Website: [www.pawa.org.au](http://www.pawa.org.au)

Post: P O Box 6, Nedlands, WA 6909

Contact: Elizabeth Morrison, President 0448 087082

Studio: Tresillian Arts Centre, 21 Tyrell St, Nedlands  
(no post to this address)



Opening of Hand Print PAWA Members Exhibition 2017

### **WELCOME TO NEW MEMBERS:**

Tessa Beale, Katie Glaskin, Aileen Hoath, Elizabeth Karol, Laura Newbury, Jaime Okill, Clinton Price, Jane Whelan

### **PRESS HIRE:**

As a PAWA member you can use our two presses and enjoy working in the PAWA Studio at Tresillian Art Centre, 21 Tyrell St, Nedlands.

To book your exclusive use of the studio, email [admin@pawa.org.au](mailto:admin@pawa.org.au) with Studio Hire as the subject. Cost is \$15 for half a day (4 hours), \$25 for a full day. If it's your first time at the studio, you need to have a 10 minute induction on site.

You can contact our Studio Coordinator Beth Porter on 0406 968731. Many of you know Rosemary Mostyn our other Studio Coordinator : she will be travelling overseas in September and October.

### **SKILL SHARE SATURDAYS:**

Once a month we get together informally to share our knowledge and experience and maybe try something new.

Skill shares are usually held on the first Saturday of the month from 10am to 2pm. Come for all or part of a session. Watch out for emails and in the newsletter for information about themes and demos.

Bring \$15 and lunch. Tea and coffee provided. Some materials provided. As always in the studio wear closed in shoes for safety reasons.

Skill Shares are held in the PAWA studio, Tresillian Art Centre, 21 Tyrell St, Nedlands.

### **DISCOUNTS FOR MEMBERS:**

Art Framers Perth (Claremont) 20%  
 Jacksons Drawing Supplies 15%  
 Oxlades Art Supplies 15%



# Housekeeping Notes

Elizabeth Morrison, PAWA President



Elizabeth Morrison, President with Bethwyn Porter, Studio Coordinator and Shelly Cowper, Committee member at the Hand Print opening.

Dear fellow printers,

Since I last wrote we have welcomed 2 new committee members: Michelle Wells, who is doing a fabulous job as our new treasurer, and Petra Sara, appointed to the general committee to fill a casual vacancy.

Speaking of committees...Sunday 5th November is the date for our Annual General Meeting. We

will be meeting at 2 pm with High Tea to follow. It's a great opportunity to meet other PAWA members so please join us at the Tresillian Art Centre.

Nomination forms for our next committee are in this newsletter. Be involved if you are able: it is such a supportive group. You can email or phone me if you want to discuss nominations.

Hand Print our 2017 member's exhibition at Atwell Gallery was a resounding success. Sales were good and we received many compliments for the curating and quality of our show. Thanks to everyone involved. Well done team !

Our Skill Share sessions are also going from strength to strength and the current Tresillian Art Centre pop up exhibition is full of beautiful prints covering a wide range of techniques. A tribute to our diverse membership.

Our next major event is the On the Map exhibition at Mundaring Arts Centre from 15<sup>th</sup> September to 15<sup>th</sup> October. Several PAWA members have had their works selected for this unframed show.

PAWA has been involved in developing the public programme to coincide with this exhibition. There will be workshops at Midland Junction Art Centre and other venues.

It will be a fantastic month to further promote the richness of printmaking in WA.

Elizabeth Morrison  
President.

# Hand Print: PAWA Members Exhibition 2017

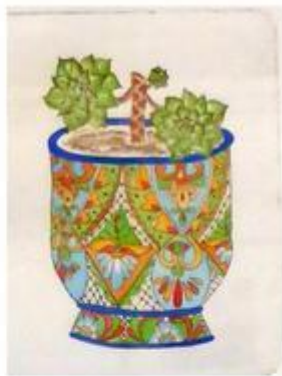
*Atwell Gallery, 15 – 23 July*



Thank you to everyone who helped out!

Special thanks to the team who hung the exhibition.

From left: Jan Trainer, Clare McCarthy, Rosemary Mostyn, Hannah Katarski, Shelley Cowper, Terry Bausor with Elizabeth Morrison and Hilda Klap in front



Prints from the exhibition. Upper row: Bethwyn Porter, Hannah Katarski, Terry Bausor, Petra Sara.

Lower row: Queenie Thum, Guundie Kuchling, Fleur May, Elizabeth Morrison



# Studio Notes

## PRINTMAKING SPECIALS AT OXLADES 1 September to 1 November



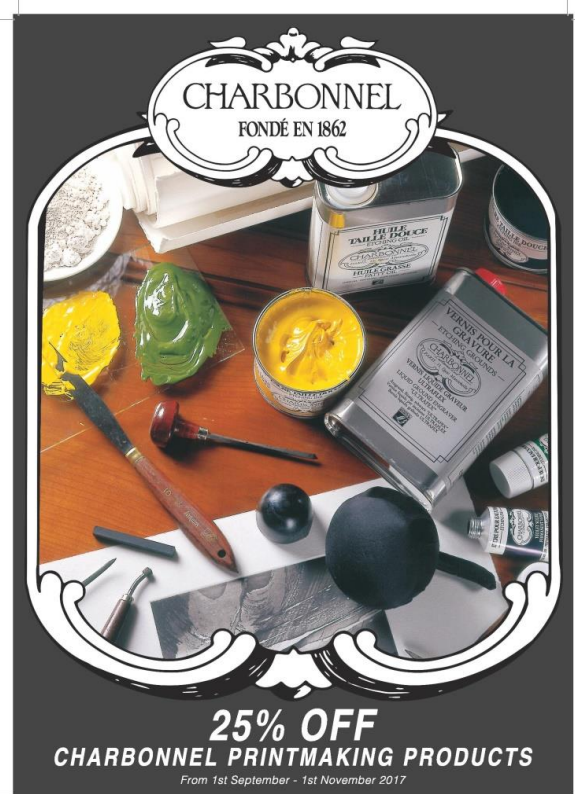
**25%  
off**

**Arches Printmaking Paper**

FROM 1ST SEPTEMBER - 1ST NOVEMBER 2017



*Paper Excellence Since 1492*



**25% OFF**

**CHARBONNEL PRINTMAKING PRODUCTS**

From 1st September - 1st November 2017

## MEMBERS GET **15% OFF** ART SUPPLIES AT:

Jacksons Drawing Supplies Pty Ltd

[www.jacksons.com.au](http://www.jacksons.com.au)

12 stores in Perth metropolitan area, regional Western Australia and the Northern Territory.

Oxlades Art Supplies

[www.oxlades.com.au](http://www.oxlades.com.au)

49 Guthrie Street, Osborne Park WA 6017

Also has stores in Queensland

## TALKING ABOUT US...

PAWA President Elizabeth Morrison answered a few questions about *HAND PRINT*, our recent PAWA members exhibition, for *IMPRINT*, the Print Council of Australia's website.

Questions include:

What is the background to *Hand Print* and what are its aims?

What are your thoughts about the WA printmaking scene- it seems to be very strong and cohesive?

To check out her answers go to:  
<http://imprint.org.au/printmaking/by-hand/>

## IMPRINT MAGAZINE

*Imprint* is a quarterly magazine dedicated to contemporary fine art printmaking – including works on paper, artists' books and experimental print-related art – published by the Print Council of Australia.

The editor Andrew Stephens would be happy to hear from PAWA members who are interested in contributing to the magazine.

Andrew Stephens

E: [imprinteditor@printcouncil.org.au](mailto:imprinteditor@printcouncil.org.au)

W: <http://imprint.org.au>



# Japanese Paper

I love paper and so it was great to talk with Cathy and Beba at Oxlades recently about their range of Japanese papers. Fine printmaking papers are made with an archival fibre source, which in the European printmaking tradition is usually cotton. Japanese papers are often made with kozo (mulberry bark), another durable and archival fibre. Often, they are handmade under centuries-old traditions.

Awagami Factory is a brand of Japanese washi papers produced solely in Tokushima, Japan. Awagami operates on 8 generations of family knowledge and skill focusing on quality and refinement within this world-heritage craft. Awagami papers are used by the world's leading artists, photographers, designers, bookbinders and conservators.

Some of the Awagami sheets available at Oxlades are listed below. The sheets are 52 x 43 cm in size and have four deckle edges.

## **Shiramine Select**

Traditional Japanese fibers such as kozo and gampi are combined to create a paper that adds subtle refinements to finished work. Its relative thickness, generous sizing, and neutral color make this acid-free, archival paper suitable for both drawing and printmaking.

## **Kitakata and Kitakata Green**

Primarily made from gampi fibre, it has a subtle gloss yet surprisingly soft surface. Warm toned yet resilient the sheet itself is quite dense making it ideal for many types of printmaking

## **Hakuho Select**

This sturdy sheet is made from a blend of kozo and cotton and is the first fine art paper to feature this unique East meets West blend. Its strong and resilient surface will lend unique textural depth to artworks created on it.

## **Bunkoshi Select**

The paper has a relatively deep natural colour and smooth surface. Its texture is classically Japanese with no additional sizing, making it good for both printmaking and calligraphy.

**Kozo** paper is made from renewable branches of the kozo (paper mulberry) bush, specifically the innermost of three layers of bark which must be isolated to be cooked and beaten before the sheets are formed. Kozo fibre makes strong, translucent and absorbent papers. Kozo is grown as a crop and harvested annually.

**Gampi** or Ganpi are a group of Japanese shrubs (genus *Wikstroemia*), some of which have been used for making paper since the 8th century. It is used to make the high quality washi paper, as are kōzo and mitsumata trees.

# PAWA Skill Share Saturdays

10am to 2pm, PAWA Studio, usually the first Saturday every month



*July Skill Share's included a screenprinting demo by PAWA member James Bryans.*

*Photos: Right- the group concentrating on James' demo including Eunie Watson, Brenda Brookes and Bethwyn Porter. Left – Hilda Klap and James Bryans.*



*August's Skill Share was about trying out dremel tools which can be used for linocutting and drypoint.*

*Photos: Right- Clinton Price, Petra Sara, Claire Lawson and others look on as Shelley Cowper discusses dremels. Left: Shelley Cowper with Claire Lawson, Guundie Kuchling and Aileen Hoath.*

*The next Skill Shares are Saturday 2 September  
and Saturday 7 October, 10am to 2pm*



# Artist Opportunities

*Go to the websites listed for more information on terms and conditions and to confirm closing dates.*

## BUSSELTON ART AWARD 2017

**22 September – 29 October**

**ArtGeo Cultural Complex, 7 Queen Street, Busselton**

Annual award open to all West Australian artists working in any medium or subject. The City of Busselton aims to build a contemporary collection of West Australian art and promote ArtGeo Gallery as an exhibition venue.

**Awards:** Acquisitive Prize \$10,000 (plus 5 week solo exhibition 2018/2019) Emerging Artist Award & Peoples Choice Award

**Entries Close: Monday 28 August**

**Entry form:** [artgeo@artgeo.com.au](mailto:artgeo@artgeo.com.au)

## CITY OF STIRLING ART AWARDS 2017

**12 – 16 October**

**City of Stirling Reception Hall, 25 Cedric Street, WA 6021**

Biennial Art Award & Exhibition is a community based event open to local and West Australian artists. Various categories/prizes.

**Entries Close: Monday 4 September 4pm**

**Entry Form online:** [www.evenbrite.com.au/e/city-of-stirling-art-award-exhibition-2017-entry-form-tickets-34946762708#](http://www.evenbrite.com.au/e/city-of-stirling-art-award-exhibition-2017-entry-form-tickets-34946762708#)

**Enquiries:** [www.stirling.wa.gov.au](http://www.stirling.wa.gov.au)

## YORK ART SOCIETY ART & CRAFT AWARDS 2017

**7 - 15 October**

Annual awards open to WA artists with various categories including Printmaking Award.

**Special Theme 'SPACE':** Two awards \$1,000 each for entries in any media category which best depict this theme.

**Entries Close: Wednesday 13 September 5pm**

**Entry forms:** [www.theyorksociety.com.au](http://www.theyorksociety.com.au)

**Enquiries:** Liz 0428 322 167

**email:** [arts.yorksociety@westnet.com.au](mailto:arts.yorksociety@westnet.com.au)

## 3<sup>RD</sup> ANIMALIA EXCHANGE EXHIBITION 2017

**International Print Exchange coordinated by Printmaking Sisters**

Proceeds of sales pledged to World Animal Protection

**THEME:** The animal kingdom/ taxonomic kingdom, comprising all living or extinct animals incl. sponges, worms, insects, fish, amphibians, reptiles, birds and mammals.

**Entries close: Monday 15 September**

**Contact:** [www.annieday.com](http://www.annieday.com)

**Enquiries:** [robin@annieday.com.au](mailto:robin@annieday.com.au)

## 2017 HORNSBY ART PRIZE (NSW)

15 September – 26 November 2017

Hornsby Shire Council, 296 Peats Ferry Rd. Hornsby, NSW

Annual art award sponsored by the Hornsby Shire Council and open to all Australian artists. Original work produced in past 2 years. Amongst the goals of the Hornsby Art Award is the aim to encourage the creative talents of artists and provide a showcase for their artworks.

**Major Prize:** Hornsby Art Prize \$10,000.

**Categories:** Printmaking, Drawing, 3D, Painting

**Entries Close:** 10 September

**Contact:** [www.hornsby.nsw.gov.au/prize](http://www.hornsby.nsw.gov.au/prize)

## ART ON THE MOVE, WA

ART ON THE MOVE invites **Expressions of Interest** from artists, curators and organisations with developed contemporary art exhibitions to be a part of the ART ON THE MOVE Touring Exhibition Program. Each ART ON THE MOVE exhibition tour travels for 30 months aiming to speak to and develop the unique cultural narratives of communities.

**Applications close:** 4.00pm Wednesday 13 September 2017.

Website: [www.artonthemove.com.au/news/latest\\_news/](http://www.artonthemove.com.au/news/latest_news/)



## POP UPS at Tresillian Arts Centre

PAWA members have the opportunity to participate in POP UP exhibitions at Tresillian. You can enter two prints and they are usually on display for a month. Details are emailed to members.

The latest POP UP is looking great! Above we can see Rosemary Mostyn's *Scorched Earth* collagraph and two prints by El mari Steyn. YOUR prints can be part of the next one!

# Exhibitions

To promote your exhibition or workshop in the next newsletter please send your information to [admin@pawa.org.au](mailto:admin@pawa.org.au) by 20 October. If you have photos or a flyer jpg we may be able to include these as well. We also forward invitations to exhibitions to members so email your flyer to PAWA anytime.



*PAWA member Leanne Bray is one of the many talented artists involved.  
Maps are available at the Mundaring Arts Centre and other locations as well as online*



## 26°S 121°E | ON THE MAP

Friday, September 15, 7:00pm

Until Sunday, October 15

CURATED BY LAURA A TAYLOR

Held in conjunction with the national launch of Print Council of Australia's 2017 Print Commission folio, and in collaboration with Printmakers Association of WA, 26°S 121°E On the Map is a survey exhibition of contemporary Western Australian printmaking.

### MUNDARING ARTS CENTRE

7190 GREAT EASTERN HIGHWAY MUNDARING WESTERN AUSTRALIA 6073

T: 08 9295 3991 | F: 08 9295 3994

OPEN TUE TO FRI 10AM - 5PM, SAT TO SUN 11AM - 3PM

CLOSED MON AND PUBLIC HOLIDAYS

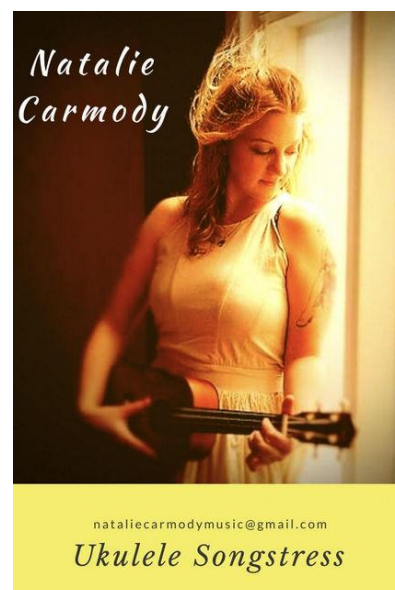
*Image: Aliesha Mafrici, Fractures, monoprint on fabriano rosapina*



# Exhibitions



Bridget Seaton, *The Loop, Kalbarri*, Oil monoprint



Natalie Carmody, musician

## Painting for a cause: The 2018 Calendar Art Exhibition

**Royal Perth Golf Club. Opening night: 20 October**

PAWA member Bridget Seaton is one of the artists selected for the 2018 Calendar.

*Paintings for a Cause* is a *not for profit, charitable organisation* which aims to promote and support art and artists and through creative collaboration, help fund special projects in support of charitable causes.

Through helping artists we can help others. We want to pay it forward.

Website: [www.paintingsforacause.com](http://www.paintingsforacause.com)

## Do you need music at your exhibition?

Natalie Carmody 0405 465 473

I had a great time playing at the Moore's Gallery for the Printmakers awards last year! I play originals and covers on a tenor ukulele. I recently played at ArtEx at the Bshed in Fremantle and find that my music suits creative spaces. I like to support artists /creatives in other genres.

Contact me if you're interested. Thank you, Natalie

<https://soundcloud.com/natalie-carmody/fallen-in-coolest-stream>

<https://m.facebook.com/ArtistCarmody/>

## BREAKING NEWS!!!! OPPORTUNITY TO EXHIBIT

The Tresillian tenants got together recently to work out details for a Tresillian Artists Exhibition being proposed for December. PAWA was ably represented by our President Liz Morrison.

Proposed deadline for entries : 23 Oct (up to 3 prints per member)

Proposed Dates: 5 – 17 December Exhibition opening: Friday 8 December

*Watch out for an email soon about this PAWA member's opportunity...  
and meanwhile...get printing!*

# PAWA Print Collection

Beth Porter, Studio Coordinator

*We feature prints from our collection in each newsletter.  
If you have any comments please email them to [admin@pawa.org.au](mailto:admin@pawa.org.au)*



In this newsletter the feature print from our PAWA print collection is from Doris Kontrimas.

The print is from a very small edition, 1 of 4, and was made in 1978. Doris has two other prints in our collection also from very small editions "Yanchep" 1 of 3 made in 1977, and "Rhythm" 1 of 3, from 1978. The print featured above is titled "Claremont" and is an etching from a zinc etching plate. It incorporates both techniques of Sugar Lift and of Aquatint.

# Workshops



## Watch out for:

PAWA Workshop at Tresillian  
**Collagraphs with Shelley Cowper**

**Saturday 21<sup>st</sup> October**

\$60 for PAWA members.

Details emailed to members soon

*Image: The Night Watch by Shelley Cowper*

## Watch out for FREE printmaking demonstrations by PAWA members at Oxlades:

Shana James recently gave an introduction to linocuts at Oxlades and during September and October Elizabeth Morrison, Bethwyn Porter, Shelley Cowper and Clare McCarthy will all be sharing their expertise and enthusiasm for printmaking in two hour sessions at Oxlades Art Suppliers, Unit 2/49 Guthrie St, Osborne Park. Let's get inspired!

## Watch out For Elmar Steyn at Tresillian:

In Term four at Tresillian, Elmar Steyn will not be offering her popular weekend workshops BUT don't despair, she will be running a more in depth program over six Monday evenings (beginning in October).

This course will be ideal to loosen up your individual creative style at your own pace. You get to explore various printmaking techniques and methods to best support your ideas including etching, aquatint and drypoint.

## 5-Day Intensive Photopolymer Printmaking –

**Agave Print Studio, Melbourne**

**23– 27 October 2017**

PAWA member Camille Lord found out about this workshop in Melbourne and thought it could be of interest to other PAWA members:

"After many enquiries I realized that there were not many resources to explore this medium at such a high level. Dianne Longley has been to Perth many years ago apparently so some may remember this event. She has been published, her exquisite work exhibited in many parts of the world - she is arguably a world leader in the form. Her prints, in book form, were on exhibition in the Melbourne Library the last time I was there. (I was also interested to see her book being the only one for sale on the website of the American best-of-best intaglio, Printmaking centre The Takach Press [www.takachpress.com](http://www.takachpress.com)). Our previous President Sue Marshall has attended a course at Dianne's Studio in the past and spoke very highly of the experience."

<http://agaveprintstudio.com.au/event/intensive-photopolymer-printmaking/>



# Midland Junction Arts Centre

## WORKSHOPS



## PAPER LITHOGRAPHY

WITH MONIQUE BOSSHARD CURBY

Join printmaker Monique Bosshard Curby to learn the process of paper lithography. Explore the unique, expressive qualities of print using photocopies as your printing matrix. Repeat the printing process and build up layers, enjoying the subtle variations and relationship between each print as they are layered together.

Tue 10 Oct | 10am - 3pm | Suitable for adults with some printmaking skills | Materials Supplied | \$60 or \$54 MAC Members

Midland Junction Arts Centre 276 Great Eastern Hwy Corner of Cale St Midland WA  
BOOK NOW [WWW.MUNDARINGARTSCENTRE.COM.AU](http://WWW.MUNDARINGARTSCENTRE.COM.AU) | T: 08 9250 8062

PRESENTED BY



SUPPORTED BY



# Midland Junction Arts Centre

## WORKSHOPS



## PRINTMAKING WORKSHOPS

WITH ELMARI STEYN

### WORKSHOP 1 SOFT GROUND ETCHING & AQUATINT

Join Elmari to learn soft ground etching and aquatint techniques, creating texture and line with lace, fabric and paper to produce soft, painterly marks.

Wed 11 Oct | 10am - 3pm | \$60 or \$54 MAC Members per session | \$25 fee for materials

### WORKSHOP 2 ETCHING AND LAYERING

Learn how to etch and layer images using multiple plates to create rich tones and intricate images.

Thu 12 Oct | 10am - 3pm | \$60 or \$54 MAC Members per session | \$35 fee for materials

Midland Junction Arts Centre 276 Great Eastern Hwy Corner of Cale St Midland WA

BOOK NOW [WWW.MUNDARINGARTSCENTRE.COM.AU](http://WWW.MUNDARINGARTSCENTRE.COM.AU) | T: 08 9250 8062

PRESENTED BY



SUPPORTED BY







**Chittering Acres Studio and Katie Sharples** are excited to be offering a one day etching workshop. This course is perfect for beginners and those with intermediate skill level.

During this workshop you will **create a limited edition of botanical prints**, using the drypoint technique and intaglio inking method. Your prints will then be hand coloured using watercolours. You will learn all about the tools, materials and equipment required for etching.

**Chittering Acres Studio is located 45mins from Midland** and Joondalup on Great Northern Highway. Nestled amongst beautiful bushland overlooking the Chittering Valley, it's a peaceful and calming place to unleash your inner creativity.

There are **only 8 places available** to ensure all prints are completed to a high standard. All tools and materials provided in the course.

**Saturday 23<sup>rd</sup> September 2017**

\$150 per person. To book, please go to the Chittering Acres Studio Facebook page.

Chittering Acres Studio, 5332 Great Northern Hwy, Chittering, WA 6084  
(Look for the big silver fish)



**Ubud Art Workshops run by PAWA member Shana James.**

## **Linocut Workshop in Ubud, Bali**



Join us for this fully immersive art experience January 7<sup>th</sup> -14<sup>th</sup> 2018. Be inspired by this creative journey and start the year feeling relaxed and rejuvenated.

This workshop is suitable for:

- Beginners, who will be given step by step instruction
- Professional Artists wishing to work on their own theme
- Up-skilling art teachers who will receive a certificate outlining the skills they have learned

Course covers:

- Hand burnishing to get results as good as printing with a press
- Composition for Linocut and the balance of black and white
- Mark-making with different tools
- Carving with clean edges
- Adding colour with chine colle
- Making your own hand tinted rice paper for chine colle

The main benefits of this workshop are being able to be completely engaged in the creative process without the distractions of daily life. Surrounded by the beautiful water gardens of the ARMA resort, it is easy to relax into the rhythm of making, with the sounds of flowing water as the backdrop. There is an onsite art museum which all participants have free entry to. And the food is amazing!

See the website for details <https://ubudartworkshops.com/>



Tresillian Arts Centre  
Studio: 21 Tyrell St, Nedlands, 6009  
Post: P.O. Box 6, Nedlands 6909

ABN : 380 453 198 41

E: admin@pawa.org.au  
W: pawa.org.au

## Annual General Meeting (AGM)

This is formal notification that the Printmakers' Association of Western Australia Incorporated will be holding their Annual General Meeting on Sunday 5th November 2017 at 2:00 pm at the Tresillian Arts Centre, 21 Tyrell St, Nedlands.

The agenda for the AGM will include:

- I. Confirmation of the Minutes of the 2017 Annual General Meeting
- II. Report from the President
- III. Report from the Treasurer
- IV. PAWA's financial statements for the fiscal year ending June 30, 2017
- V. Voting for the positions of:
  - President
  - Vice President
  - Secretary
  - Treasurer
  - General Committee

On the General Committee:

- Studio Co-ordinator (2)
- Minutes Secretary
- Newsletter Co-ordinator/s
- Web Page Manager/s
- Exhibitions and Skillshare

If you have a specific area of interest please note it on your nomination form.

**Complete the Nomination Form and mail by 5 PM on Friday 27th October 2017 to:**

**SECRETARY, PAWA**  
**P.O. Box 6 NEDLANDS WA 6909**

Elizabeth Morrison  
President

**PRINTMAKERS ASSOCIATION OF WA**  
**ANNUAL GENERAL MEETING, Sunday 5 November 2017**  
**NOMINATION & ACCEPTANCE FOR EXECUTIVE POSITIONS**

**NOMINATION**

I the undersigned member of Printmakers Association of WA Inc. hereby nominate:

---

for election to the position of: (please tick)

- ☐ President
- ☐ Vice President
- ☐ Treasurer
- ☐ Secretary
- ☐ General Committee

Signature :

Date:

**ACCEPTANCE**

I the undersigned consent to the nomination and to act as office bearer in the position of \_\_\_\_\_ for PAWA for the year commencing from 6 Nov 2017

Signature :

Date:

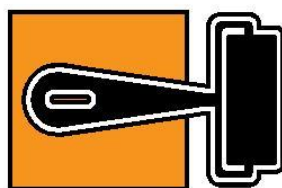
The members and outgoing committee welcome and congratulate you for your commitment to PAWA.

Please post Nominations by **5 PM on Friday 27th October 2017** to:

**Printmakers Association of WA, P.O. Box 6 NEDLANDS WA 6909**



2017


**PAWA**

 PRINTMAKERS ASSOCIATION  
OF WESTERN AUSTRALIA Inc.

 ABN: 380 453 198 41  
Tresillian Arts Centre  
Post: P.O. Box 6, Nedlands 6909

## MEMBERSHIP FORM

31st January 2017 to 31st January 2018

 E: admin@pawa.org.au  
W: www.pawa.org.au  
President: Elizabeth Morrison 0448 087 082  
Treasurer: Michelle Wells 0400 355 332

To join or renew your membership for PAWA, fill out the form and return via post, or scan &amp; email.

 Name: 

 Address:  Postcode: 

 Mobile number:  Home or work number: 

 Email: 

 Select: ☐ *Renewal* ☐ *New Membership*

Please clearly mark your type of Membership:

☐ Artist \$50

☐ Concession / Pensioner / Student \$25 ID number / Institution: 
☐ Art Organisation / Institution \$65

Membership entitles you to monthly e-newsletters, 15% discount at Oxlades and Jacksons Art Supplies, 20% discount at Claremont Art Framers, studio access and press hire, exhibition opportunities and workshop attendance (fee applies).

Email or post this form and indicate your payment option below

☐ 1. Cheque payment to 'Printmakers Association of WA' post to **P.O. Box 6, Nedlands WA 6909**
☐ 2. Direct bank deposit **(BSB) 306 047 (ACC) 045 87 38** to PAWA and enter your first initial and surname (as much as can fit) as the reference e.g.ASmith.

 Write your reference here: 
☐ 3. Visa / Mastercard: Name on card: 

 Card number:  Expiry date:  CCV: 

Please do not post to the studio. All mail to: PAWA, P.O. Box 6, Nedlands WA 6909

# Thank you to our sponsors

## ART SUPPLIES

Jacksons Drawing Supplies Pty Ltd

[www.jacksons.com.au](http://www.jacksons.com.au)

PAWA members receive a 15% discount

Oxlades Art Supplies

[www.oxlades.com.au](http://www.oxlades.com.au)

PAWA members receive a 15% discount

## FRAMING

Art Framers Gallery (Claremont)

[www.artframers.com.au](http://www.artframers.com.au)

PAWA members receive a 20% discount

White Room Framing Studios

10 Central Rd, Kalamunda WA 6076

Phone: (08) 9293 1011

Quattro Framing

124 Wellington St, Mosman Park WA 6012

Phone: (08) 9293 1011

## OTHER

morrisonart

Contact: Liz Morrison

Facebook: [www.facebook.com/printingfun4u/](https://www.facebook.com/printingfun4u/)

Phone: 0448 087082

Minuteman Press Fremantle

[www.minutemanfremantle.com](http://www.minutemanfremantle.com)

Phone: (08) 9433 4599

Rosily Vineyards

Margaret River

[www.rosily.com.au](http://www.rosily.com.au)

Talison Lithium

[www.talisonlithium.com.au](http://www.talisonlithium.com.au)

