

PAWA Newsletter

October / November 2017



*We're passionate about
printmaking*



PRINTMAKERS' ASSOCIATION OF WESTERN AUSTRALIA

PAWA is a not for profit organization for printmakers in Western Australia.

Our committee is made up of PAWA members who volunteer their time and expertise.

PATRON

LEON PERICLES

COMMITTEE 2017

PRESIDENT

ELIZABETH MORRISON

TREASURER

MICHELLE WELLS

SECRETARY

CLARE MCCARTHY

MINUTES SECRETARY

HILDA KLAP

OFFICE CO-ORDINATORS

ROSEMARY MOSTYN
BETH PORTER

GENERAL COMMITTEE

SHELLEY COWPER
MONIQUE BOSSHARD-CURBY
PETRA SARA

CONSULTANT

DALLAS PERRY

WWW.PAWA.ORG.AU

CONTENTS:

PAWA Committee, 2
PAWA members'information, 2-3
Housekeeping notes, 4
On the Map Exhibition, 5-6
Congratulations, 7-8
PAWA Print Collection, 9-10
Studio Notes, 11
PAWA Skill Share Saturdays, 12
Artist Opportunities, 13-14
Workshops, 15-16
Exhibitions, 17-20
AGM notice and nominations form, 21-22
Membership form, 23
Thank you to our sponsors, 24

COVER PHOTO:

Photo from the Paper Lithography Workshop with Monique Bosshard-Curby held at Midland Junction Arts Centre on 10 October 2017. (held in conjunction with the On the Map exhibition).
Photo by Rosemary Mostyn.

CONTACT DETAILS:

Email: admin@pawa.org.au

Website: www.pawa.org.au

Post: P O Box 6, Nedlands, WA 6909

Phone: Elizabeth Morrison, President 0448 087082

Studio: Tresillian Arts Centre, 21 Tyrell St, Nedlands
(no post to this address)



Paper Lithography workshop, Midland Junction Art Centre, 10 October 2017

WELCOME TO NEW MEMBERS:

Jane Button, Jillian Ciemitis, Cynthia Dix, Naomi Forsey, Ian Foster, Annemarie McAuliffe, Emi Ninoseki, Elizabeth Royce, Eibhlin Scanlon, Amelia Sonnekus, Kataran Vekaria

PRESS HIRE:

As a PAWA member you can use our two presses and enjoy working in the PAWA Studio at Tresillian Art Centre, 21 Tyrell St, Nedlands.

To book your exclusive use of the studio, email admin@pawa.org.au with Studio Hire as the subject. Cost is \$15 for half a day (4 hours), \$25 for a full day. If it's your first time at the studio, you need to have a 10 minute induction on site.

You can contact our Studio Coordinators BethPorter 0406 968731 or Rosemary Mostyn 0403 466529

SKILL SHARE SATURDAYS:

Once a month we get together informally to share our knowledge and experience and maybe try something new.

Skill shares are usually held on the first Saturday of the month from 10am to 2pm. Come for all or part of a session. Watch out for emails and in the newsletter for information about themes and demos.

Bring \$15 and lunch. Tea and coffee provided. Some materials provided. As always in the studio wear closed in shoes for safety reasons.

Skill Shares are held in the PAWA studio, Tresillian Art Centre, 21 Tyrell St, Nedlands.

DISCOUNTS FOR MEMBERS:

Art Framers Perth (Claremont) 20%
 Jacksons Drawing Supplies 15%
 Oxlades Art Supplies 15%

Housekeeping Notes



On the Map curator, Laura Taylor talks with PAWA President, Elizabeth Morrison, at the exhibition opening. They are standing next to Elizabeth's print.

Dear fellow printers,

Since I have last written we have had so many exciting events take place.

Congratulations to our members who have sold works, presented fantastic workshops, won awards, made beautiful prints and generally helped us promote fine art printmaking in WA. You will see more details in the following pages.

Our collaboration for On the Map with the Print Council of Australia (WA branch), Mundaring Arts Centre and Midlands Junction Arts Centre has been a resounding success. All credit to Laura Taylor, the exhibition curator, for her vision.

I would like to thank AGWA, in particular Peter Casserly for allowing us to explore some of their beautiful print collection. We truly felt honoured and delighted, and are grateful for the work behind the scenes which allowed this experience.

As you are aware our AGM is on the 5th November 2pm at Tresillian. Please join us if you can: if not send your nominations for the committee by mail. We will be having a delicious

high tea at the AGM and it's an opportunity to meet other PAWA printmakers.

If you feel that you do not have the time to commit to our executive, please feel free to put your hand up to help wherever you can, whether it be with our web page, helping us find sponsors or articles for our newsletter.

We are very excited to see what the next year may bring.

If you are using our beautiful facilities at Tresillian, please ensure our presses are treated with love and respect. After all without them so many beautiful prints would not grace the walls we see them on.

Mostly I would like thank you all for the respect and friendship you have shown during my term as President.

Most kind regards.

Elizabeth Morrison
PAWA President

See you at the AGM and High Tea
Sunday 5 November 2pm
Tresillian Arts Centre, Nedland

26°S 121°E On the Map



Twenty five PAWA members were among the 35 printmakers representing WA in the survey show 26°S 121°E On the Map exhibited at the Mundaring Arts Centre from 15 September until 15 October 2017.

The exhibition gave a glimpse of the diversity of print practices across WA and included well known printmakers as well as introducing younger artists.

“Surface, depth and grappling with country” were recurrent themes according to Perdita Phillips whose article covering the exhibition can be seen in the Spring 2017 edition (Vol 52:3) of *imprint* magazine (the quarterly journal of the Print Council of Australia Inc)

In conjunction with the exhibition, workshops by Monique Bosshard-Curby and Elmari Steyn were held at the Midland Junction Art Centre. (See more later in the newsletter).

Thanks go to all the organisers and especially curator Laura Taylor.

26°S 121°E | ON THE MAP

CURATED BY LAURA A TAYLOR

Held in conjunction with the national launch of Print Council of Australia's 2017 Print Commission folio, and in collaboration with Printmakers Association of WA, 26°S 121°E | *On the Map* is a survey exhibition of contemporary Western Australian printmaking.

PARTICIPATING ARTISTS

Susan Allwood, Tessa Beale, Monique Bosshard Curby, Leanne Bray, Rhonda Breen, Jillian Ciemitis, Helen Clarke, Lorraine Corker, Moira Court, Nicola Cowie, Shelley Cowper, Annette Davis, Willemina Foeken, Sandra Hall, Penny Hudson, Michael Jalaru Torres, Shana James, Hannah Katarski, Guundie Kuchling, Pippa Lightfoot, Camilla Loveridge, Monika Lukowska, Aliesha Mafici, Andrew McDonald, Clyde McGill, Melanie McKee, Elizabeth Morrison, Rosemary Mostyn, Dallas Perry, Eveline Ruys, Petra Sara, Bridget Seaton, Elmari Steyn, Janette Trainer and Vanessa Wallace

26°S 121°E On the Map Opening



Artists at the opening of On the Map on 15 September 2017. Clockwise from top: Petra Sara and Elizabeth Morrison in front of Petra Sara's print; Monique Bosshard-Curby with her print; Guundie Kuchling (left) whose prints were in the exhibition with curator Laura Taylor (right); Shana James with her print; Shelley Cowper with her print. Photos by Clare McCarthy.

Congratulations!



Shelley Cowper

Winner:

Acquisitive First Prize \$5,000

City of Stirling Art Award & Exhibition

Title: The Boatyard
watercolour, etching, relief print

At the City of Stirling Art Award opening on 11 October, PAWA Committee member Shelley Cowper was surprised and delighted to find out she had won the top prize.

Shelley Cowper has a BFA Hons degree from Robert Gordon University in Scotland and is an artist printmaker with her own practice. She is a lecturer in printmaking at North Metro TAFE. Shelley has won a number of awards and has work in public and private collections. PAWA members recently enjoyed a special collagraph workshop with Shelley on 23 October at our studio.

The City of Stirling Art Award & Exhibition showcases local and Western Australian artists working in a variety of mediums from painting and drawing to sculpture and textiles.

Over 180 artworks were displayed and prizes were awarded by a panel of expert judges.

The 2017 Art Award was hosted at the City of Stirling Reception Hall from 12 -16 October. The Awards are held biennially with the next one expected to be held in 2019.

www.stirling.wa.gov.au/Recreation/Arts-and-culture/Pages/art-awards.aspx
photo by Rosemary Mostyn

Congratulation to all PAWA printmakers who have received awards recently. We would love to hear your printmaking news so please email us the details (with images if possible) for sharing in the newsletter or on our facebook page. Email: admin@pawa.org.au

Elmari Steyn

Winner: Printmaking Prize \$500

The York Society Art & Craft Awards 2017

Title: Eyrie: S28°37.895'/ E116°

Etching

www.theyorksociety.com/art-craft-awards.html



Elizabeth Morrison

Highly Commended

Bassendean Visual Art Awards 2017

Title: In My Garden

Dry point etching/multi layered mono print.

Photo by Nonie Jekabsons

Andrew McDonald Highly Commended

Fremantle Art Centre Print Award 2017

Title: Five Pieces of Sand.

Hand-carved rubber stamps, freehand printing with rubber and ink rollers, archive ink on Arches BFK watercolour paper.

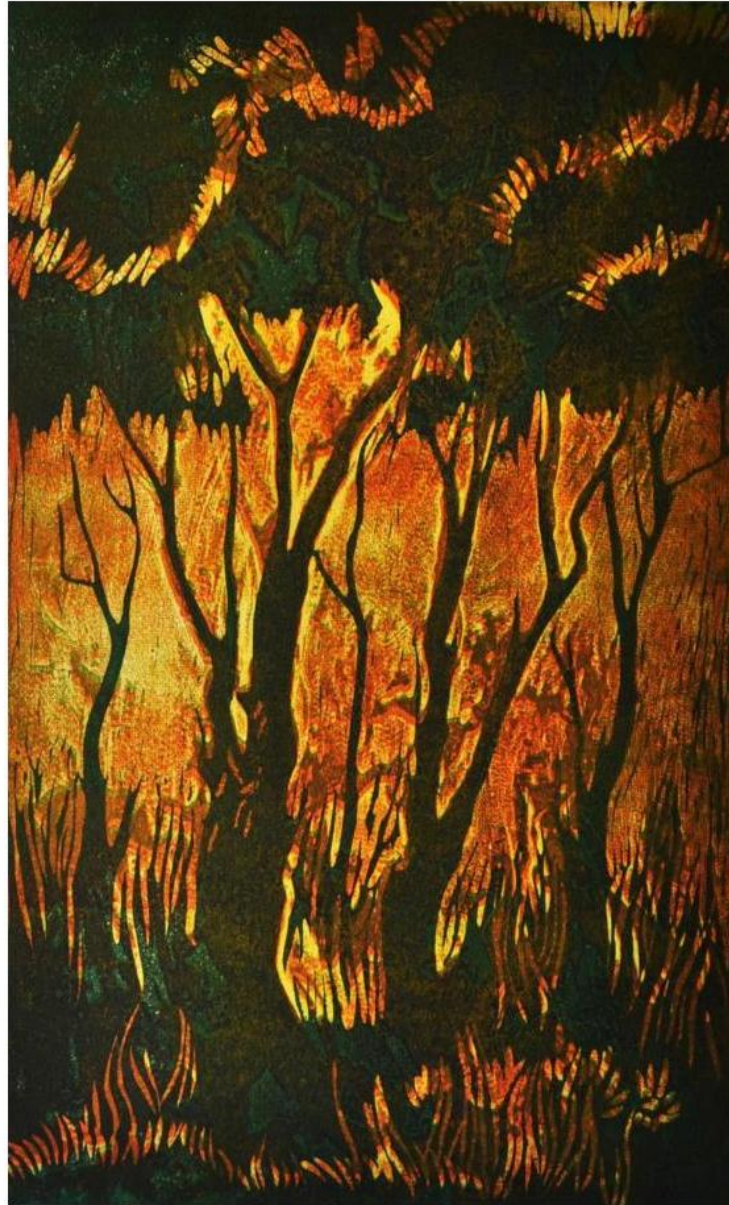
Andrew McDonald's print and other innovative contemporary prints can be seen at the Fremantle Arts Centre until 12 November. PAWA member Monika Lukowska is also a finalist.



PAWA Print Collection

Beth Porter, Studio Coordinator

*We feature prints from our collection in each newsletter.
If you have any comments please email them to admin@pawa.org.au*



In this issue we feature an untitled print from our collection by Ron Gomboc, made in 1976. It is a multi-layered print which has a background printed from two different textured collagraph plates and is then overlaid with a reduction lino print. It is a large print, and the 2nd print from an edition of only 3.

I recently chatted with Ron about his memories of the days he studied printmaking in the seventies at Perth Tech and Claremont School of Art. He recalled this piece and he described how the scene was

developed after seeing a bush fire. Terrie, Rons' wife, said printmaking was an integral part of why their gallery got started in the first place as the first exhibition ever in the Gomboc Gallery was of Rons' printmaking work. Ron recalled that the print, shown above, centred round his own experience of a bush fire. He recalled it was very scary, and the feelings of the heat and seeing those colours and the silhouette of the trees stuck in his psyche. He wanted to recreate that moment when he felt the fire was sucking all the oxygen out of the air, and was moving so fast, that all you wanted to do was to get out of there.

As we talked he recalled that he and many of his fellow students were very experimental and enjoyed trying and sharing new ideas. They swapped work and ideas with one another. Ron remembered printing a long length white linen with circular black lino prints of the comedian Spike Milligan making a very striking length of material.

Ron Gomboc is still a professional working artist who currently works mainly in the area of sculpture. His practice is based at Gomboc Gallery and Sculpture Park, the largest private gallery in Western Australia, which he set up, along with his wife Terrie, in 1982. He has won over 20 international and numerous local awards in his artistic pursuits including WA Citizen of the Year.

He has many examples of his work dotted around the city...one of which I noticed recently while visiting Heathcote Art Precinct, which is a commissioned memorial to actor Heath Ledger. He works in many materials, including aluminium, steel, bronze, stone or wood and apart from one 20m high steel sculpture for which he contracted out the construction, he has always done all the work himself.

Go up to the Gomboc Gallery and Sculpture Park, take a picnic lunch and spend the day wandering through the sculpture park and looking at the many beautiful art works on display inside the gallery.



Gomboc Gallery and Sculpture Park, 50 James Road, Middle Swan, WA 6056

Image from the Gomboc Gallery and Sculpture Park website
www.gomboc-gallery.com.au

Studio Notes

PAWA AGM and HIGH TEA

Sunday 5 November 2pm
Tresillian Art Centre



Support our committee
and meet other printmakers
while enjoying afternoon tea

Desert River Sea: Kimberley Art Then and Now

A visual arts initiative/project with both online and physical components and developed over the past 6 years by the Art Gallery of WA and the Rio Tinto Community Investment Fund, will conclude with a publication and landmark exhibition in 2018.

Through a Visual Arts Leaders professional development program, artists and administrators have gained a valuable knowledge of the curatorial aspect of exhibitions with many artists filmed at work.

An informative digital portal www.desertriversea.com.au displays more than 500 artworks which also include a variety of print media.

The Kimberley Art Trail Map can be downloaded as a self drive guide when visiting the various indigenous art centres in remote areas of WA.

We're updating our website... Would you like your artwork featured on the pawa.org.au website?

Simply email admin@pawa.org.au with *Member Page Request* in the subject field and the following information in the body of the email:

1. Artist statement (250 words maximum)
2. Links to your website and or social media page(s)
3. Up to 5 labelled artwork images

Already have a page you'd like to update?

Email admin@pawa.org.au with *Update Member Page Request* in the subject field

Put your change request details in the body of the email.

Not ready to commit to your own page but have artwork images to share?

We'd love to add your photos to our *Gallery* page. Email admin@pawa.org.au with *Gallery*

Page Image in the subject field and captioned images of your artwork attached.

SAVE THE DATE PAWA CHRISTMAS PARTY

Sunday 3 December 4pm



Venue to be announced

PAWA Skill Share Saturdays

10am to 2pm, PAWA Studio, usually the first Saturday every month



September's Skill Share was an opportunity to bring along any current projects or any print items of interest to share. A classic skill share you might say as this is what they're all about.

Left: Claire Lawson working on a multi piece lino cut. Right: Work in progress: Petra Sara's cats.



At our October skill share we attempted to rescue unsuccessful prints. An interesting discussion was had about why a print may be considered unsuccessful. We then chose from the selection and worked to see if we could bring resolution to the print. Challenging and fun. Thanks to Monique for leading this.

: experimenting with prints.. Left: Hilda Klap, Beth Porter and Monique Bosshard-Curby.

The next Skill Share is Saturday 4 November.

There are no skill shares in December and January.

The PAWA Christmas party is on Sunday 3 December (details will be emailed)

Artist Opportunities

Go to the websites listed for more information on terms and conditions and to confirm closing dates.

MIDLAND JUNCTION ARTS CENTRE 2018 EXHIBITIONS AND RESIDENCIES

Applications close: 17 November 2017

Apply to exhibit at Midland Junction Arts Centre in 2018 and contribute to a new vision for the arts in Midland. There are a variety of exhibition and residency spaces available.

Exhibition and residency proposals invited from artists, curators, groups and tertiary art students. Applications are welcome from emerging, mid-career and established artists across all disciplines and visual art forms, as well as curatorial proposals. They are especially keen to see proposals responding to the region and promoting artistic collaboration.

MJAC has two main gallery spaces as well as artist residency spaces, and studios for ceramics and printmaking. There are opportunities for residencies to culminate in exhibitions of works created on site.

Proposals will be assessed by the quality of the work, the project rationale, audience development activities and gallery availability at the specified time.

Website: www.mundaringartscentre.com.au/mjac-call-to-artist-2018/

THE COLLIE ART PRIZE

Entries close: 12 January 2018

Collie Art Gallery, 134 Throssel St, Collie, WA

Exhibition: 2 March – 15 April 2018

Theme: Identity

The Collie Art Prize invites artists to submit significant artworks which will explore the age-old issue of identity and belonging to the world around us. The competition invites entries in a variety of mediums and artistic treatment of the subject. Acquisitive first prize: \$50,000 (Total prize pool \$63,500)

Entry form: www.colleartgallery.org.au/collie-art-prize

THE MANDORLA ART AWARD 2018 (FINALISTS EXHIBITION)

Entries close: 12 March 2018

Turner Galleries, Perth

Exhibition: 1 – 30 June 2018

Theme: “And then I saw a new heaven and a new earth”

Entry is open to all Australian artists working in a range of mediums.

Mandorla Aware (acquisitive) \$25,000. Total prize pool \$37,000

Entry form: www.mandorlaart.com/2018-award

Enquiries: Kristy Gough curator@mandorlaart.com

12TH INTERNATIONAL ARTE LAGUNA PRIZE (2018)

Entries close: 16 November 2017

Arsenale Novissimo, Venice, Italy

Finalists Exhibition: 17 March – 8 April 2018

International free themed Contemporary Art Prize open to all artists in nine different categories

Five major prizes EU 7,000 each. Finalists announced: January 2018

Selected artists: Residencies in Europe/USA/India

Finalists: Solo exhibitions in Europe

Entry form: www.artelagunapriz.com

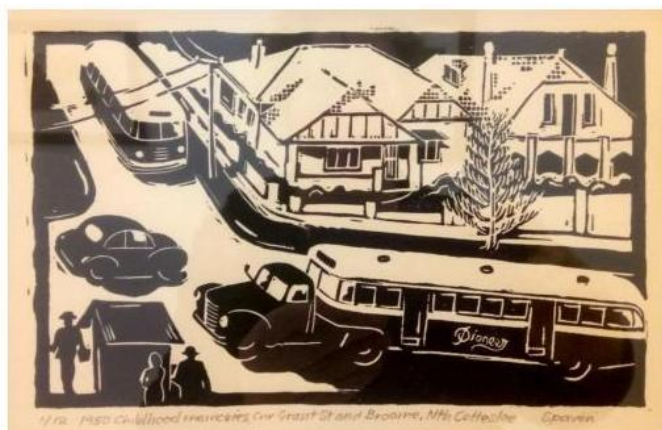
Enquiries: info@premioartelaguna.it

EXHIBITION AT TRESILLIAN

December 2017

The Tresillian Artists Exhibition proposed for December (mentioned in the last newsletter) is not going ahead. We look forward to collaborating with the other Studio tenants at another time.

POP UP at Tresillian Arts Centre



Two of the many prints that can be seen at the latest POP UP. Left: Jenny Rosser's print "Lunch" and Right: Christopher Spaven's "1950 Childhood memories Cnr Grant St and Broome, Nth Cottesloe"

PAWA members have the opportunity to exhibit in the POP UP exhibitions at Tresillian Art Centre where the PAWA Studio is located. It's an opportunity to get your work seen and maybe even sell a print! Please join in as we need a range of prints and styles to best reflect PAWA. You can enter up to two framed prints which will be exhibited for 4 to 6 weeks. Watch out for emails with further details about POP UP exhibitions in 2018.

A new POP UP exhibition has just been hung and can be seen until Friday 1 December.

Workshops with Elmari Steyn



In conjunction with the On the Map exhibition held at Mundaring Arts Centre, workshops were held at the Midlands Junction Arts Centre. Elmari Steyn held two workshops: Soft Ground Etching & Aquatint, 11 October, and Etching and Layering, 12 October. Participants learned how to etch and layer images using multiple copper plates to create rich tones and intricate images. Elmari's print, *Australian Cat Herder* was included in the exhibition.

Workshop with Monique Bosshard-Curby



In conjunction with the On the Map exhibition held at Mundaring Arts Centre, workshops were held at the Midlands Junction Arts Centre. Monique Bosshard-Curby held oneworkshop: Paper Lithography, 10 October. Participants explored the unique, expressive qualities of print using photocopies as the printing matrix. They built up layers enjoying the subtle variations and relationships between each print. Monique's print, *In Search of Lost Time* May 31, 2017 was included in the On the Map exhibition.

Exhibitions

To promote your exhibition or workshop in the next newsletter please send your information to admin@pawa.org.au by 20 December. If you have photos or a flyer jpg we may be able to include these as well. We also forward invitations to exhibitions to members so email your flyer to PAWA anytime.

Fremantle Arts Centre Print Award

22 September – 11 November 2017

Fremantle Arts Centre, 1 Finnerty St, Fremantle WA 6160

The Awards showcase the best of contemporary Australian printmaking. With more than 50 prints and artists' books ranging from traditional to boundary-pushing, selected from 300 entries, the exhibition presents established, emerging and cross-disciplinary artists from all over Australia. This highlight on the FAC exhibition calendar continues to celebrate the artistry, skill and craftsmanship of traditional printmaking alongside works which look towards the future of the medium.

Finalists exhibiting include PAWA members Monika Lukowska and Andrew McDonald.

Website: www.fac.org.au

Cover Story by the South West Printmakers

Opening: 3 November 6pm Exhibition: 3 November – 21 January

Ron Middleton Gallery, Bunbury Regional Art Galleries

An exhibition of contemporary hand crafted prints and artists' books. Artists include several PAWA members: Yvonne Dorricott - Lianne Jay - Sue Dennis - Anne-Marie Lapinski - Elizabeth Royce (PAWA) - Janette Trainer (PAWA) - Carol Farmer (PAWA) - Helen Hulme-Gerrard - Cynthia Dix (PAWA).

More information on the next page.

Website: www.brag.org.au

Art Fest at Hamptons Beachside Restaurant & Bar

Opening: 26 October 6:00 – 9:00 pm

Exhibition 9:00 am – 7:30 pm October 27 and October 28, 9:00 – 5:00 October 29

Hamptons City Beach, Challenger Parade

PAWA member Willemina Foeken, from Southern River, is part of a group of seven women who have joined forces to exhibit at Hamptons Beachside Restaurant & Bar at the end of October. Besides Willemina, the group includes Shirley Winstanley, Georgia Efford, Irene Osborne, Mary Cowell, Carmen McFaul and Gulia Gataullina.

Enquiries: Willemina w.foeken@inet.net.au

DIP-ART

Opening: 25 November, 12 - 4 pm then 27-30 November, 10 am - 4 pm

Showcase Gallery, 12 Aberdeen Street, Northbridge

TAFE Diploma class exhibition which includes PAWA Committee member Petra Sara's triptychs of cat etchings and screenprints. For more information, contact Petra on 0408 820088.



Beyond Boundaries by Lynne Mitchell & Denise Gillies mixed media

Ground Matters

Lynne Mitchell and Denise Gillies

3 November - 10 December 2017

A collaborative printmaking exhibition that investigates the passage of time and layered landscapes

You are cordially invited to the official opening in the ArtGeo Gallery, 7 Queen Street Busselton

When: Saturday, 4 November 6 - 7:30pm

Guest Speaker: Julian Bowron (Bunbury Regional Art Galleries)

ArtGeo Cultural Complex Open 7 day 10 - 4
www.artgeo.com.au Free entry



COVER STORY

An exhibition of contemporary hand crafted prints and artists' books created by

The South West Printmakers

Sue Dennis, Cynthia Dix, Yvonne Doricott, Carol Farmer, Helen Hulme-Gerard, Lianne Jay, Anne-Marie Lapinski, Janette Trainer, Elizabeth Royce

To be opened by Lynne Mitchell,
6pm Friday 3 November 2017

Exhibition 4 November - 21 January

Ron Middleton Gallery
upstairs - Bunbury Regional Art Galleries

Artists' Talk - Saturday November 11 at 2pm

Printmaking workshops by TSWP will also be held at BRAG during the exhibition
visit www.brag.org.au for details

COVER STORY

by The South West Printmakers

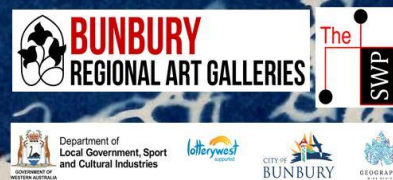
Cover Story

Print Share

How often do we choose a book by its cover?

Each of the artists participating in this exhibition have chosen an existing book and reimagined it, then created their own dustcover or 'Cover Story' in a limited edition of 11 to share - one for each member of the group and one for the exhibition, for you, the viewer, to ponder and possibly make your own.

'Seaweed' cyanotype print by Helen Hulme-Gerard



GROUND MATTERS:

A new joint exhibition by accomplished Ferguson Valley printmakers
Lynne Mitchell and Denise Gillies.



Opens at Artgeo Gallery Busselton on Saturday 4th November, 6pm.

Lynne Mitchell and Denise Gillies had so much fun working together for their recently concluded joint exhibition “On the Same Page” at Bunbury Regional Art Galleries, they decided to continue the partnership.

They have consequently been busy in the studio and are excited to be unveiling more new collaborative works for their second joint exhibition, ‘Ground Matters’, to be shown at Artgeo Gallery, Busselton in November. Opening night is on Saturday 4 November, 6 - 7.30pm.

Both artists use a range of mixed media but with a strong emphasis on printmaking techniques to produce artworks loosely themed around aspects of layered landscapes and hidden histories. Since Lynne and Denise also work separately in their own studios, each artist will also present a selection of individual works to reflect their solo art practices, in addition to the collaborative pieces making up the main body of this exhibition.

‘Ground Matters’ exhibition runs from Friday 3 November – Sunday 10 December 2017. Artgeo gallery, 7 Queen St, Busselton, is open 10am-4pm daily and entry is free.



Print Fair in Melbourne



APW Print Fair

Only three weeks to go!

A special weekend celebrating fine art printing and original limited edition fine art prints.

This is a rare chance to engage with leading Fine Art Printers including representatives from:

- Albicocco Printing Workshop (Italy)
- Cicada Press (Sydney)
- Negative Press (Melbourne)
- Sunshine Editions (Melbourne)
- Australian Print Workshop (Melbourne).

Wander through the APW Print Studio, see printing demonstrations and view 100s of artworks.

Affordable original fine art prints will be available for sale.

Saturday 18 and Sunday 19 November 2017.
10am-5pm each day. Free entry

Australian Print Workshop Gallery

210 Gertrude Street, Fitzroy, Victoria 3065 T: (03) 9419 5466 E: auspw@bigpond.com
<http://australianprintworkshop.com>



Tresillian Arts Centre
Studio: 21 Tyrell St, Nedlands, 6009
Post: P.O. Box 6, Nedlands 6909

ABN : 380 453 198 411

E: admin@pawa.org.au
W: pawa.org.au

Annual General Meeting (AGM)

This is formal notification that the Printmakers' Association of Western Australia Incorporated will be holding their Annual General Meeting on Sunday 5th November 2017 at 2:00 pm at the Tresillian Arts Centre, 21 Tyrell St, Nedlands.

The agenda for the AGM will include:

- I. Confirmation of the Minutes of the 2017 Annual General Meeting
- II. Report from the President
- III. Report from the Treasurer
- IV. PAWA's financial statements for the fiscal year ending June 30, 2017
- V. Voting for the positions of:
 - President
 - Vice President
 - Secretary
 - Treasurer
 - General Committee

On the General Committee:

- Studio Co-ordinator (2)
- Minutes Secretary
- Newsletter Co-ordinator/s
- Web Page Manager/s
- Exhibitions and Skillshare

If you have a specific area of interest please note it on your nomination form.

Complete the Nomination Form and mail by 5 PM on Friday 27th October 2017 to:

SECRETARY, PAWA
P.O. Box 6 NEDLANDS WA 6909

Elizabeth Morrison
President

PRINTMAKERS ASSOCIATION OF WA
ANNUAL GENERAL MEETING, Sunday 5 November 2017
NOMINATION & ACCEPTANCE FOR EXECUTIVE POSITIONS

NOMINATION

I the undersigned member of Printmakers Association of WA Inc. hereby nominate:

for election to the position of: (please tick)

- ☐ President
- ☐ Vice President
- ☐ Treasurer
- ☐ Secretary
- ☐ General Committee

Signature :

Date:

ACCEPTANCE

I the undersigned consent to the nomination and to act as office bearer in the position of _____ for PAWA for the year commencing from 6 Nov 2017

Signature :

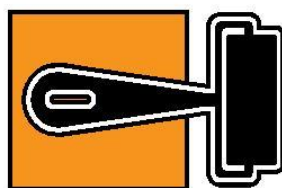
Date:

The members and outgoing committee welcome and congratulate you for your commitment to PAWA.

Please post Nominations by **5 PM on Friday 27th October 2017** to:

Printmakers Association of WA, P.O. Box 6 NEDLANDS WA 6909

2017


PAWA

 PRINTMAKERS ASSOCIATION
OF WESTERN AUSTRALIA Inc.

 ABN: 380 453 198 41
Tresillian Arts Centre
Post: P.O. Box 6, Nedlands 6909

MEMBERSHIP FORM

31st January 2017 to 31st January 2018

 E: admin@pawa.org.au
W: www.pawa.org.au
President: Elizabeth Morrison 0448 087 082
Treasurer: Michelle Wells 0400 355 332

To join or renew your membership for PAWA, fill out the form and return via post, or scan & email.

 Name:

 Address: Postcode:

 Mobile number: Home or work number:

 Email:

 Select: ☐ *Renewal* ☐ *New Membership*

Please clearly mark your type of Membership:

☐ Artist \$50

☐ Concession / Pensioner / Student \$25 ID number / Institution:
☐ Art Organisation / Institution \$65

Membership entitles you to monthly e-newsletters, 15% discount at Oxlades and Jacksons Art Supplies, 20% discount at Claremont Art Framers, studio access and press hire, exhibition opportunities and workshop attendance (fee applies).

Email or post this form and indicate your payment option below

☐ 1. Cheque payment to 'Printmakers Association of WA' post to **P.O. Box 6, Nedlands WA 6909**
☐ 2. Direct bank deposit **(BSB) 306 047 (ACC) 045 87 38** to PAWA and enter your first initial and surname (as much as can fit) as the reference e.g.ASmith.

 Write your reference here:
☐ 3. Visa / Mastercard: Name on card:

 Card number: Expiry date: CCV:

Please do not post to the studio. All mail to: PAWA, P.O. Box 6, Nedlands WA 6909

Thank you to our sponsors

ART SUPPLIES

Jacksons Drawing Supplies Pty Ltd

www.jacksons.com.au

PAWA members receive a 15% discount

Oxlades Art Supplies

www.oxlades.com.au

PAWA members receive a 15% discount

FRAMING

Art Framers Gallery (Claremont)

www.artframers.com.au

PAWA members receive a 20% discount

Quattro Framing

124 Wellington St, Mosman Park WA 6012

Phone: (08) 9293 1011

OTHER

morrisonart

Contact: Liz Morrison

Facebook: www.facebook.com/printingfun4u/

Phone: 0448 087082

Minuteman Press Fremantle

www.minutemanfremantle.com

Phone: (08) 9433 4599

Rosily Vineyards

Margaret River

www.rosily.com.au

Talison Lithium

www.talisonlithium.com.au

