

# PAWA Newsletter

April / May 2018



# **PRINTMAKERS' ASSOCIATION OF WESTERN AUSTRALIA**

PAWA is a not for profit organization for printmakers in Western Australia.

Our committee is made up of PAWA members who volunteer their time and expertise.

## **PATRON**

LEON PERICLES

## **COMMITTEE 2017 -2018**

### **PRESIDENT**

ELIZABETH MORRISON

### **TREASURER**

MICHELLE WELLS

### **SECRETARY**

CLARE MCCARTHY

### **MINUTES SECRETARY**

SHELLEY COWPER  
PETRA SARA

### **STUDIO CO-ORDINATORS**

ROSEMARY MOSTYN  
BETH PORTER

### **GENERAL COMMITTEE**

MONIQUE BOSSHARD-CURBY  
HILDA KLAP

### **CONSULTANT**

DALLAS PERRY

**WWW.PAWA.ORG.AU**

## **CONTENTS:**

PAWA committee, 2  
Press Gang invitation, 3  
PAWA members information, 4  
Housekeeping notes, 5  
Studio notes, 6  
Workshop proposal form, 7  
Overwintering Project , 8-9  
PAWA Print Collection: Hiroshi Tomahari, 10-11  
Skill share Saturdays, 12  
Skill share, Print Day in May, 13  
Skill share, Collaborative Project, 14  
Exhibitions, 15-17  
Workshops & courses, 18-20  
Artist opportunities, 21-23  
Pawa exhibitions, 24  
Membership form, 25  
Thank you to our sponsors, 26

## **COVER PHOTO:**

Work in progress for the PAWA Members 2018 Collaborative Work "Banquet", Skill Share, April 2018. Photos by Clare McCarthy.

## **CONTACT DETAILS:**

Email: [admin@pawa.org.au](mailto:admin@pawa.org.au)

Website: [www.pawa.org.au](http://www.pawa.org.au)

Post: P O Box 6, Nedlands, WA 6909

Phone: Elizabeth Morrison, President 0448 087082

Studio: Tresillian Arts Centre, 21 Tyrell St, Nedlands  
(no post to this address)

Newsletter edited by Clare McCarthy

# PRESS GANG: PAWA MEMBERS' EXHIBITION 2018

Come and support PAWA and meet the printmakers at our exhibition opening.



Clinton Price | **Nature**

Andrew McDonald | **Angel and Rat**

Cynthia Dix | **Shoes of the Fisherman**

YOU ARE CORDIALLY INVITED TO THE **OPENING EVENT** FOR

## 'PRESS GANG'

2pm SUNDAY 20<sup>TH</sup> MAY 2018

'Press Gang' is the Printmakers' Association of WA Inc. (PAWA) 2018 Member's Exhibition and reflects the diversity of contemporary fine art printmaking in WA.

PAWA embraces new print technologies while maintaining the use of traditional techniques.



Mon–Fri: 9am–4pm, Sat–Sun: 10am–4pm  
**50 Railway Road, Kalamunda** (08) 9257 9998  
[zzcc@kalamunda.wa.gov.au](mailto:zzcc@kalamunda.wa.gov.au) [www.zzcc.com.au](http://www.zzcc.com.au)



**EXHIBITION OPEN TO THE PUBLIC SATURDAY 18<sup>TH</sup> MAY TO MONDAY 4<sup>TH</sup> JUNE 2018**





PAWA Members Skill Share: Saturday 3 February 2018.

## **WELCOME TO NEW MEMBERS:**

Mia Davis, Emma Greene.

Thank you to all members who have renewed their membership.

## **PRESS HIRE:**

As a PAWA member you can use our two presses and enjoy working in the PAWA Studio at Tresillian Art Centre, 21 Tyrell St, Nedlands.

To book your exclusive use of the studio, email [admin@pawa.org.au](mailto:admin@pawa.org.au) with Studio Hire as the subject. Cost is \$15 for half a day (4 hours), \$25 for a full day. If it's your first time at the studio, you need to have a 10 minute induction on site. Studio Mentors available to help: cost with studio hire \$35 full day, \$25 half day.

You can also contact our Studio Coordinators Beth Porter 0406 968731 or Rosemary Mostyn 0403 466529

## **SKILL SHARE SATURDAYS:**

Once a month we get together informally to share our knowledge and experience and maybe try something new.

Skill shares are usually held on the first Saturday of the month from 10am to 2pm. Come for all or part of a session. Watch out for emails and in the newsletter for information about themes and demos.

Bring \$15 and lunch. Tea and coffee provided. Some materials provided. Some papers and other materials available to buy. As always in the studio wear closed in shoes for safety reasons.

Skill Shares are held in the PAWA studio, Tresillian Art Centre, 21 Tyrell St, Nedlands.

## **DISCOUNTS FOR MEMBERS:**

Art Framers Perth (Claremont) 20%

Jacksons Drawing Supplies 15%

Oxlades Art Supplies 15%

# Housekeeping Notes



*Hand Print: PAWA Members 2017 exhibition held at Atwell Gallery*

## Dear fellow printers,

Entries for our annual PAWA members' exhibition PRESS GANG close on Friday 27<sup>th</sup> April. Please don't forget you need to also fill in and send us the Supplier Details form (for Zig Zag gallery to pay you if your work sells). If you don't have an ABN you need to also send us the Statement by a Supplier (a tax form). These were emailed to you all and were in the last newsletter.

As usual we look forward to a fantastic show and opening event. The Opening will be on Sunday 20<sup>th</sup> May 2pm to 4pm. The exhibition will be open to the public from Friday 18<sup>th</sup> May to Monday 4<sup>th</sup> Jun 2018 inclusive.

On Saturday the 5<sup>th</sup> May we will be celebrating Print Day in May at our regular Skill Share Session at our Tresillian studio. We welcome you all to join in this world wide celebration of print, if not in person then post a print on your facebook page. See page 12 for more information.

You can also deliver your Press Gang entries to Tresillian for transportation to Kalamunda at this Skill Share if necessary (10am to 2pm). Yes, we can also bring your prints back to Tresillian after the exhibition.

You will have seen the PAWA workshop proposal form I sent to members. We look forward to our members running lots of exciting workshops for other members. Note that workshop presenters are paid. Get in touch with your ideas and we can work out the details. We know you have a wealth of talent and knowledge to share. The form is included in this newsletter.

Also exciting, our beloved Patron Leon Pericles, will have his Margaret River studio open as part of the Margaret River Region Open Studios from Saturday 28<sup>th</sup> April to Sunday May 13<sup>th</sup>. Leon is always happy to share his joy, knowledge and experience. A must if you can make it. See [www.mrropenstudios.com.au](http://www.mrropenstudios.com.au).

Happy, happy printing !!!

Warmest regards, Elizabeth Morrison

# Studio Notes

Did you know that all members have access to the PAWA studio at the Tresillian Art Centre in Nedlands?

\$25 a day or \$15 half day  
\$35 a day or \$25 half day with a mentor

To book email [admin@pawa.org.au](mailto:admin@pawa.org.au)  
or call our Studio Coordinators  
Rosemary 0403 466 529 or Beth 0406 968731

## Would you like to run a workshop?

Part of PAWA's mandate is to offer workshops to our members.

We have developed a form so that our members can take the opportunity to tell us about the workshops they could run to enrich the print lives of other members. Remember we have a range of abilities and experience among our members so both beginners and more advanced workshop ideas are welcome.

Please read the form for details of how to forward your proposed workshop details to us.

Workshop presenters are paid \$48 an hour. We discuss all details with you including the best dates for you to present the workshop.

The workshops are for PAWA members. Non-members are of course welcome on payment of the membership fee (plus workshop fee).

We look forward to planning some fantastic days we can share together.



# Workshop proposal

## 2018



Please fill out form, scan/take photo and email or post to PAWA. Thank you for your participation.

[admin@pawa.org.au](mailto:admin@pawa.org.au) P O Box 6, Nedlands, WA 6909 Elizabeth Morrison, President, 0448 087082

### Contact Information:

Proposed workshop date(s).	
Name	
Email	
Mobile	

### Title and Description of course: (75 words max):

### About the tutor (75 words max):

### Cost of materials and what will be provided. Do participants need to bring own ?

**PARTICIPANTS:** For PAWA members only. 6-10 places available. Enough places must be booked to cover fees for workshop to proceed. Anticipated fee for participants \$60 plus materials. For non-members the cost is workshop fee plus membership fee to allow attendance in accordance with PAWA lease and insurance contracts.

**LOCATION:** PAWA Studio at Tresillian Arts Centre, 21 Tyrell St, Nedlands.

**TIME:** Saturdays or Sundays for up to 6 hours. Usual start time is 10am. Workshops may run for more than 1 day, but must adhere to our agreement with Tresillian to hold only 1 per month.

**PAYMENT:** Payment for the workshop is made to PAWA and PAWA pays the facilitator \$48 an hour.

**MATERIALS:** Use of PAWA equipment is included, extra materials to be provided by workshop facilitator and fees for these to be added to workshop fee if required. eg: \$15 materials paid at workshop to facilitator.

**IMAGE:** Please provide a jpg image of your work for the workshop flyer





*Thomson Lake photo by Petra Sara*

## ***Overwintering Project: visit to Thomson's Lake***

*A small group of WA artists including several PAWA members visited Thomson's Lake recently as part of the Overwintering Project. It was our first experience with this project and was about getting a sense of place and gathering information.*

*Thomson's Lake is part of the Beeliar Wetlands area. Over 10,000 birds visit this internationally important wetland and nature reserve each year to feed before the lake dries out in the summer.*

*Thomson's Lake Nature Reserve, including the lake and adjacent woodland, has an area of 538 hectares (1,330 acres). The lake is a shallow, brackish, seasonal lake with a large area of open water when full. It has extensive fringing sedgeland typical of the Swan Coastal Plain, and is a major breeding site, migration stop-over and semi-permanent drought refuge area for waterbirds. It usually dries out during the summer, though occasionally retaining some water through the year.*

*The reserve has been fenced to keep out feral predators, which has allowed the Southern Brown Bandicoot (*Isodon obesulus*) to increase in numbers here. The Western Grey Kangaroo (*Macropus fuliginosus*) and Brush Wallaby (*Macropus irma*) both inhabit the park.*

*We had a beautiful afternoon for our visit and while we didn't see many birds we did find feathers. We also saw a big group of kangaroos and other solitary kangaroos as we walked. The Lake is dry at the moment and we walked across the spongy ground which at other times of year will be under water.*

*We hope to return and see the contrast between the wet and dry lake for ourselves. We will also look at Forestdale Lake. We hope more artists will join us for future visits. (see next page).*





***Do you want to join in?***

**PROJECT DESCRIPTION:**

*The Overwintering Project is an environmental art project inviting artists from Australia and New Zealand to visit, research, and respond to the unique nature of their local migratory shorebird habitat. Australia and New Zealand have over 100 internationally important shorebird overwintering sites. These sites are not interchangeable: each possesses a unique combination of physical and biological features that make it the perfect sanctuary for migratory shorebirds to return to year after year.*

**PARTICIPATION IN WA:**

*Forrestdale and Thomson Lakes just South of Perth are home to a significant population of migratory shorebirds which include Red-necked Stints, Sharp-tailed Sand-pipers and Curlews. Thomsons Lake is one of Western Australia's most important conservation reserves. It has been included in conjunction with Forrestdale Lake on the List of Wetlands of International Importance under the Ramsar Convention.*

*If you would like to be part of a WA contingent please contact Shelley Cowper, PAWA Committee member, email: [shelleyc@iinet.net.au](mailto:shelleyc@iinet.net.au) More information at [www.theoverwinteringproject.com](http://www.theoverwinteringproject.com)*



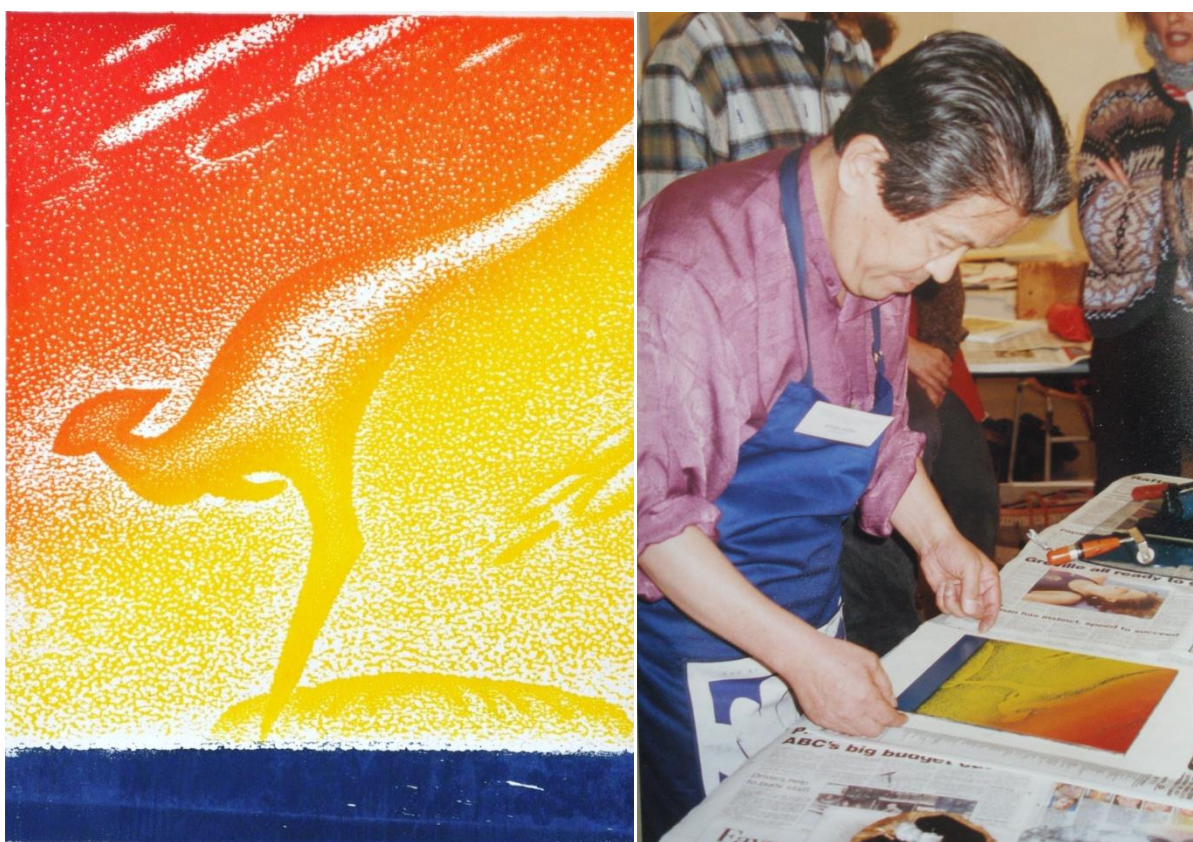
*Visit to Thomson's Lake, April 2018. Photos by Aileen Hoath*

# Hiroshi Tomihari

## PAWA Print Collection

Beth Porter, Studio Coordinator

*We feature prints from our collection in each newsletter.  
If you have any comments please email them to [admin@pawa.org.au](mailto:admin@pawa.org.au)*



Above: A print from our collection and Hiroshi Tomihari in 1996, demonstrating at the PAWA residency work shop.

In this edition of our PAWA Newsletter, we are featuring a print from the Japanese woodcut artist, Hiroshi Tomihari. We have several prints of his in our collection, which can be viewed at PAWA's studio at Tresilian.

Tomihari is often described as a specialist in modern Mokuhanga. (Moku means wood, Hanga means print). A master in this traditional technique of woodblock printing he was sent by Japan to the USA in 1972, as an official delegate artist which was an immense honour.

Tomihari was an early leader in the post-World War II revival of the Ukiyo-e woodblock print. The term Ukiyo-e is a genre of Japanese Art which flourished from the 1600's through to the 1800's. Its artists produced woodblock prints and paintings of such subjects as beautiful women, Kabuki actors, sumo wrestlers, scenes from history and folk tales,



travel scenes and landscapes, flora and fauna, and erotica. The term Ukiyo-e translates as “pictures of the floating world” and refers to the world of the common people.

Hiroshi Tomiharis’ woodcut prints, mirror this tradition and often portray recognizable landmarks or city skylines, birds, flowers, wildlife or the female form as popular motifs. These motifs were often interpreted using multiple textures and stylized repetitive patterning, with similar line work to the early engravers, where the width of the line constantly varies. Mostly printed in black and white, some prints included one or more colours.

Of those prints in our folio, all hand cut with traditional woodcut tools, some are signed and titled in Japanese however some are not. The edition size of 120 was used for most of his prints in our collection, and they are dated either 1992, ‘95 or ‘96.

It was in 1996 that Hiroshi and his wife Yai, came to WA for a 6 week “Artist in Residence” placement and held workshops for PAWA, Curtin University and ECU. Similar workshops had been held in Busselton previously and he had generously donated valuable works to BASSCA (Busselton and Sugito sister city gift collection) and to the city of Busselton. Tomihari has exhibited widely in Japan, Australia, America and Europe. His work is represented in many major collections worldwide, including the National Museum of Modern Art in Tokyo, the Metropolitan Museum of Art, the British Museum and the Art Gallery of New South Wales.

In 1996, a solo exhibition of Tomiharis’ work was held at Gallery East. Tomihari was one of the Gallery East artists and his work was often included in their group exhibitions. Gallery East no longer has a permanent gallery space but is still involved in organising exhibitions in Perth with a special focus on Japanese culture. See <http://www.galleryeast.com.au>

Hiroshi Tomiharis’ visit culminated in an opportunity for members to exhibit work in the Tomihari Museum of Woodcuts and Saitama Museum of Modern Art in Japan in 1998.



PAWA members at the Hiroshi Tomihari workshop with his wife Yai in 1996

Left-Right: Jan Telfer, Hiroshi Tomihari, Roz Currie, Yai Tomihari, Hedy Krasevac, Joy Johnson, Anne Blockley, Hilda Klap, Jeanette Lewis, Rosemary Mostyn



# PAWA Skill Share Saturdays

10am to 2pm, PAWA Studio, usually the first Saturday every month



*At PAWA skill shares in March and April we worked on our collaborative piece for the biennial 2018 Contemporary Print Media Awards to be held at Moores Contemporary Building Art Gallery, Fremantle in August. If you weren't at skill share you can still create your own plate to add to this collaborative work which will continue to evolve over the next few months. See page 13 for some of the work in progress and more information about this project.*

*Photo by Liz Morrison.*

## ***Next Skill Shares: 5 May and 2 June***

*Come for all or part of the session 10 am to 2pm. Wear closed shoes and maybe an apron in the studio.*

*Cost \$15. Some materials free with good paper for printing available to buy.*

*Free tea and coffee, nibbles. Bring your own lunch.*

*More information on the next two pages.*



## SKILL SHARE: 5 May

### Print Day in May: Print Rescue

As with our exhibition Press Gang, we want to celebrate the spirit of co-operation and support amongst printmakers. With this in mind be brave and share some of your less successful prints and maybe find a sympathetic printmaker who will help you improve it.

Bring a print to rescue. Bring a print (and the plate) that you feel has been unsuccessful and we will try different ways to rescue it and re-print.

If you're feeling bold you could even let someone else print from your plate and see what happens!

Sometimes all you need is another point of view.

We will be sharing our prints via facebook as part of the international Print Day in May.

### About Print Day in May:

Print Day in May, the first Saturday in May, celebrates the art and community of printmakers. It's a day to get together in studios across the world to make prints.

Each year participation grows; we have had people from Australia, Argentina, France, Mexico, and of course, the United States of America. Printmakers have opened their studios to friends, used their cars as presses, made prints on the beach all to spread the joy of printmaking.

Come join us on as we make prints on May 5th, 2018. Chime in here to let us know where you printed, with whom, and then send a photo or two to post on the site.

Print Day in May began in 2007 at the Monterey Peninsula College (MPC), Monterey, CA. The MPC Fine Art Print Club (now the [MPC Printmakers](https://printdayinmay.com)) created it to encourage printmakers everywhere to create prints on the same day . . . an all-inclusive printmaking effort! Join the MPC Printmakers, and make some prints during Print Day in May!

From the Print Day in May website: <https://printdayinmay.com>



[illegible]

## SKILL SHARE: 2 June

## BANQUET gets some COLOUR

## PAWA CONTEMPORARY PRINT MEDIA AWARDS 2018

Printmakers' Association of Western Australia April –May 2018



# Exhibitions

Email [admin@pawa.org.au](mailto:admin@pawa.org.au) to have your exhibition included here. Deadline for the next newsletter is 20 June.

**What are you doing this year? Please let us know when you are exhibiting and we can include it in the newsletter or email your invite out to our 150 members.**

## KATIE GLASKIN: SCENT OF A FALLING DARK

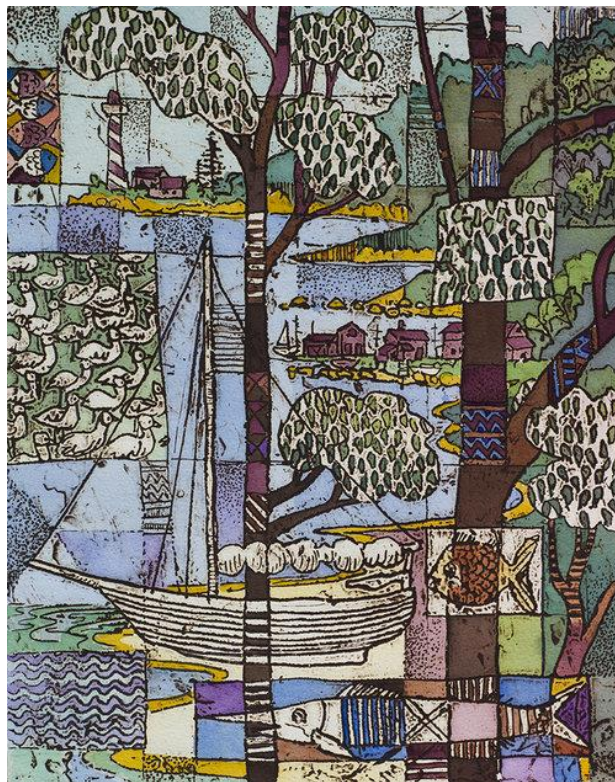
PAWA member Katie Glaskin's exhibition opens on Friday 27 April 6pm at the Moore's Building, 46 Henry St, Fremantle. The exhibition is then open 10am to 6pm until 13 May.



## MINNAWARRA ART AWARDS 2018

Congratulations to PAWA members Shelley Cowper and Dallas Perry who have had their artwork selected for the Minnawarra Art Awards. The exhibition is held at the Greendale Centre, 12 Coombe Ave, Armadale, WA 6112.





*Clinker in the bay, collagraph by Leon Pericles*

## MARGARET RIVER REGION OPEN STUDIOS 2018 28 APRIL TO 13 MAY

Our patron Leon Pericles is among the many talented artists opening their studios this year.

This information is from the website [www.mrropenstudios.com.au](http://www.mrropenstudios.com.au). A free printed guide can be picked up from art galleries and art centres including Tresillian Arts Centre in Nedlands.

Please note that many of the studios are private venues and not open to the public outside of the Open Studio's event dates. If you wish to visit a studio at an alternative time please contact the artist

### LEON PERICLES

#### The Falls Studio & Garden, 18 Widji Lane, Burnside

Leon and his wife Moira divide their time between Perth and their studio in Margaret River. Leon has had over 150 solo exhibitions throughout Australia during his long artistic career and has developed a devoted following of fans who love his unique style and sense of humour. With a strong rural influence to his work as a result of his childhood spent in outback Australia, he covers themes as diverse as history, sailing, fishing and environmental issues. Directions: Take Horseford Road off Burnside Road, Freshwater Drive is a loop off Horseford and Widji Lane is off Freshwater Drive

OPEN 10am-4pm

A = By Appointment Only X = Closed

S	S	M	T	W	T	F	S	S	M	T	W	T	F	S	S
28	29	30	X	X	X	4	5	6	7	X	X	X	11	12	13



T: 0407 774 680 / 9758 8481 [penandpaint@echidna.id.au](mailto:penandpaint@echidna.id.au) [www.leonpericles.com.au](http://www.leonpericles.com.au)



## You are invited to “In and Around the Home”

An exhibition by **ArtWorks**



Top, L to R: Mary Cowell,  
Willemina Foeken, Shirley  
Winstanley  
Left: Georgia Efford  
Right: Irene Osborne



An exhibition by 5 women artists at Zig Zag Gallery, 50 Railway Rd, Kalamunda WA 6076

**Opening: Saturday 28 April 2:00 – 4:00**

**Exhibition till 13 May**

**Opening hours: Monday - Friday: 9am - 4pm**

**Weekends & Public Holidays: 10am - 4pm**

This is an exhibition by 5 women from varied backgrounds. Some have degrees and postgraduate degrees in art and some have lectured in art at tertiary level. A few have developed their art through private teachers and workshops and all work at a high professional standard.

Irene Osborne, Shirley Winstanley and Willemmina Foeken have exhibited internationally. These three, as well as Mary Cowell, teach and conduct workshops from their own studios and for art societies while Georgia Efford regularly holds workshops in Ubud, Bali.

The current exhibition shows we don't have to travel far to find inspiration. It is all around us, in a bowl of fruit, a vase of flowers, a corner of a room, sunlight filtering through windows, a pile of clothes, our pets and endless delights in the gardens around our homes. There is a shared passion for colour, light, atmosphere and finding the extraordinary in the ordinary.

This will be an exhibition to feed the soul and delight the senses.

### RSVP

If you wish to attend the opening on Saturday 28 April, 2:00 pm, please contact Willemmina via email: [w.foeken@inet.net.au](mailto:w.foeken@inet.net.au). There's no need to reply if attending any other day. Please bring your friends!



# Workshops + Courses

Email [admin@pawa.org.au](mailto:admin@pawa.org.au) to have your workshop included here. Deadline for the next newsletter is 20 June

## Printmaking Courses at Fremantle Arts Centre April – June

Look out for the Fremantle Arts Centre booklet listing all their courses (a copy is in the PAWA studio) or go to their website: [www.fac.org.au/courses](http://www.fac.org.au/courses)

Courses at Fremantle Arts Centre by PAWA member Shana James include:

## Explore Print

Mon 30 April – Mon 25 June 9.30 – 12.30

### SHANA JAMES

Have you always wanted to try your hand at printmaking? Or are you looking to extend your skills? Be guided through different types of printmaking by tutor Shana James. You can work on your own project or be given an idea to start you off. Choose between linocut, drypoint and etching or try your hand at all of them throughout the course.

## Discover Printmaking: Step-by-Step Linocut

Wed 02 May – 23 May 9.30 am – 12.30pm

Also Linocut (Night) Tues 15 May -19 June 6.30 – 9pm

### SHANA JAMES

Linocut is a printmaking technique that involved carving an image into linoleum (yes the flooring!). Guided by an experienced tutor you'll start by creating an image and learning the carving process before printing the image on FAC's press. Come away with some new skills and a striking black and white image which can be printed multiple times.

## Etching

Sat 19 May – 23 June 9.30 to 12.30

### SHANA JAMES

Etching metal to print images is a process which famous artists such as Rembrandt have used for centuries. Starting with a simple line drawing create small-scale images which you can print on FAC's etching press. Be guided through the process step-by-step by an experienced tutor.

SEE MORE on their website.

Contact Tresillian Arts Centre for Elmar Steyn's courses: 93891977

# Art Courses

## Weekend Workshops

### Printmaking – Dry-point and Monoprint

**Elmar Steyn**

Experiment with the innovative combination of dry-point and monoprint. Create endless opportunities for linear mark-making and painterly colour. This two-day workshop is suitable for novice printmakers and more experienced artists.

2 sessions starting 9 June  
Saturday and Sunday  
10am to 3pm

**\$150**



### Etching – Layers and Combinations

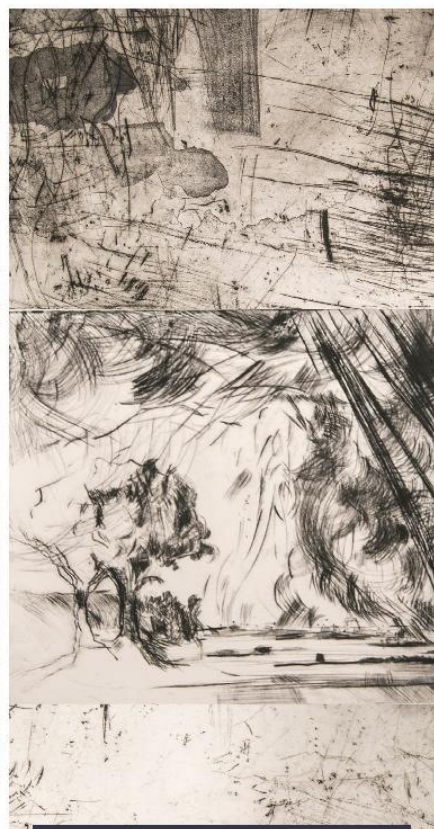
**Elmar Steyn**

Explore the vast range of mark-making and unique textural variations of different types of ground in copperplate etching. Learn to prepare and etch the plate, then over-print and layer multiple images. Combine Chine-collé, textured imagery and selective wiping with delicate hand-colouring to create intricate and richly toned prints.

2 sessions starting 23 June  
Saturday and Sunday  
10am to 3pm

**\$150**

# Midland Junction Arts Centre WORKSHOP



## DRYPOINT WORKSHOP

WITH MONIKA LUKOWSKA

Over four sessions explore drypoint intaglio printmaking technique where lines are scratched directly into a plate.

Using drawings and photographs as guides, scratch and incise into polyethenel plates to create a series of prints with characteristic velvety lines, varied tonality and expressive marks

Learn about selective wiping method, color printing, editions, and how to combine drypoint with chine-collé, monotype and stencil printing.

Thursdays 24 May – 14 June | 10am - 1pm | Suitable for 16+ years

\$180 | \$162 MAC Members | Materials Supplied

### BOOK NOW

[WWW.MUNDARINGARTSCENTRE.COM.AU](http://WWW.MUNDARINGARTSCENTRE.COM.AU)

T: 08 9250 8062

### MIDLAND JUNCTION ARTS CENTRE

276 GREAT EASTERN HWY  
CORNER OF CALE ST  
MIDLAND WA

PRESENTED BY



SUPPORTED BY





# Artist Opportunities

*Please go to the websites listed for more information on terms and conditions and to confirm closing dates.*

## WAVERLEY-WOOLLAHRA ART PRIZE 2018

Waverley-Woollahra Art School, Bondi, NSW

Thursday 5<sup>th</sup> July-15<sup>th</sup> July

Annual prize pool of \$12,000

Several Categories including a printmaking prize of \$500

The printmaking prize is sponsored by the Waverley-Woollahra Art School and is non-acquisitive

**ENTRIES CLOSE: THURSDAY 18<sup>th</sup> MAY, 5pm**

**ENTRY FORM:** on the Waverley Woollahra Art School web site

## LETHBRIDGE 10000 Small Scale Art Award 2018

LETHBRIDGE Gallery, Paddington, BRISBAND, QLD

12<sup>th</sup> July - 22<sup>nd</sup> July

First Prize (Acquisitive) \$10,000

5 Commendation Awards

Small Scale Art Award which includes 2D works on paper section

Entries must not exceed 61cm for the size of work (and framing must be of narrow width)

**ENTRIES CLOSE: FRIDAY 1 JUNE**

**ENTRY FORM:** [lethbridgegallery.com](http://lethbridgegallery.com)

## PERTH ROYAL ART PRIZE

22 SEPTEMBER – 29 SEPTEMBER (during the IGA Perth Royal Show)

First Prize \$20,000 and total prize pool \$23,000

A non-acquisitive prize for 2D Artwork that interprets the theme of landscape.

Open to all WA artists, metropolitan and regional. The only prize in WA based on the theme of landscape.

**ENTRIES CLOSE: 6th July, 4.30pm**

**ENTRY FORMS:** [www.perthroyalshow.com.au](http://www.perthroyalshow.com.au)

## THE FREMANTLE ART CENTRE PRINT AWARD

1 Finnerty Street, Fremantle(WA)

Friday 14<sup>th</sup> SEPTEMBER - Sunday 4<sup>th</sup> NOVEMBER

FIRST PRIZE: \$16,000 (ACQUISITIVE) SECOND PRIZE: \$6,000

SPONSORED BY LITTLE CREATURES BREWING (TOTAL PRIZE POOL \$22,000)

Open to all Artists living and working within Australia, one entry only, using any print process

**ENTRIES CLOSE: FRIDAY 18<sup>TH</sup> MAY ARTISTS NOTIFIED: FRIDAY 22<sup>ND</sup> JUNE**

**ENTER ONLINE:** [www.fac.org.au /for-artists/fremantle-arts](http://www.fac.org.au/for-artists/fremantle-arts)

## 2018 HADLEY'S ART PRIZE

Hadley's Orient Hotel Gallery, Hobart (TAS)

21 JULY – 25 AUGUST

Open Acquisitive Award: \$100,000 Highly Commended & Peoples Choice Awards

Annual Prize in any medium (no photography). Open to Australian artists portraying the Australian landscape.

**ENTRIES CLOSE: FRIDAY 18 MAY ENTRY FORM:** [www.hadleysartprize.com.au](http://www.hadleysartprize.com.au)

## **CITY OF MELVILLE 2018 ART AWARDS**

MELVILLE CIVIC CENTER, 10 Almondbury Rd, Booragoon

8<sup>th</sup> SEPTEMBER-16<sup>th</sup> SEPTEMBER

Awards up to \$14,000 or more

Includes multiple categories of painting, works on paper, 3D sculpture/textiles, youth award and peoples choice, along with numerous Judges Highly Commended awards with \$500 prizes.

Open to Western Australian artists including tertiary art students, secondary school students and City of Melville residents.

**ARTIST REGISTRATION WILL OPEN IN JUNE 2018 – the first 250 registrations are accepted.**

**ENQUIRIES:** [artawards@melville.wa.gov.au](mailto:artawards@melville.wa.gov.au) or phone 9364 0650

## **CP2018: COMPACT PRINTS INTERNATIONAL PRINT EXHIBITION /EXCHANGE 2018 (QLD)**

17 AUGUST-23 SEPTEMBER 2018

Biennial Exhibition/Exchange open to all Australian/International print media artists coordinated by Umbrella Studio Contemporary Art Gallery, Townsville, QLD.

**REGISTRATION IS OPEN NOW**

**ENQUIRIES:** [www.umbrella.org.au/compactprints](http://www.umbrella.org.au/compactprints)

## **ARTIST IN RESIDENCE PROGRAM 2018 (MELBOURNE, VIC)**

Australian Print Workshop is seeking proposals from Artist/Printmakers resident outside Melbourne who wish to undertake a 3 week Artist Residency in September or October 2018.

Two residencies are currently available:

**3 – 22 September and 1 – 20 October.**

**APPLICATIONS CLOSE: WEDNESDAY 30 MAY 2018**

**ENQUIRIES:** [www.australianprintworkshop.com](http://www.australianprintworkshop.com)

# **PAWA Exhibitions 2018**

## **PRESS GANG: PAWA MEMBERS EXHIBITION 2018**

ZIG ZAG GALLERY, KALAMUNDA CULTURAL PRECINCT, 50 RAILWAY RD, KALAMUNDA 6076

18 MAY – 04 JUNE

Annual exhibition open to PAWA members only. Enter up to 3 framed prints.

Fill in entry form, Supplier Details form and a Statement of Supplier form if you have no ABN. Then email or post to PAWA. The forms have been emailed to PAWA members.

**ENTRIES CLOSE: FRIDAY 27 APRIL 5pm**

## **PAWA CONTEMPORARY PRINT MEDIA AWARDS 2018**

MOORE'S BUILDING, CONTEMPORARY ART GALLERY

46 HENRY ST, FREMANTLE

10 – 19 AUGUST OPENING: FRIDAY 10 AUGUST 6 TO 8 PM

Showcasing the diversity of printmaking in WA, the awards exhibition is open to all WA artists. (2 prints can be entered). This well established, sponsored exhibition reflects the aims of PAWA to not only embrace new technologies but to also retain the skills of traditional printmaking techniques. This is the 30<sup>th</sup> Contemporary Print Media Awards. Entry form are emailed to PAWA members and on our website.

**ENTRIES CLOSE: FRIDAY 20 JULY 5pm.**





## J.S. BATTYE CREATIVE FELLOWSHIP 2018 INFORMATION FOR APPLICANTS

**Applications open Wednesday April 18 2018 and close 5.00pm Wednesday May 30 2018.**

The State Library of Western Australia is pleased to offer a Creative Fellowship to support creative engagement with the State Library's heritage collections. The Fellowship is open to artists and creative practitioners of any discipline across all contemporary art forms.

The aim of the Creative Fellowship is to enhance engagement with the Library's heritage collections and provide new and innovative experiences for the public through the development of creative works.

The Fellowship will provide a supportive environment enabling artists to delve into the rich range of material within the heritage collections, informing their creative practice which responds to these collections in any way they choose.

The successful applicant will be required to complete the Fellowship before 30th June 2019, with research support from specialist staff, and space provided to work within the J.S. Battye Library of West Australian History. The Fellowship supports the development and/or creation of a new artwork or body of work. The Fellow will present their creative work through some form of public presentation or artistic outcome.

**For more information go to <https://slwa.wa.gov.au/about-us/fellowships-and-scholarship>**



# Membership 2018

31 Jan 2018 to 31 Jan 2019



Being part of PAWA includes opportunities to exhibit, discounts at art suppliers and framers, participation in members only skill shares and workshops, access to the PAWA studio plus newsletters and email updates on printmaking in WA and more. Join and enjoy meeting printmakers and learning new skills.

Please fill out form, scan/take photo and email or post to PAWA. Thank you for joining PAWA.

[admin@pawa.org.au](mailto:admin@pawa.org.au) P O Box 6, Nedlands, WA 6909 Elizabeth Morrison, President, 0448 087082

**Your Contact Information:** if renewing and details are unchanged tick here ☐

Name	
Email	
Address	
Post code	
Mobile	
Other phone	
Website	

**Membership:** Please tick your type of membership and provide details as needed:

<input type="checkbox"/> Renewal	
<input type="checkbox"/> New Member	
<input type="checkbox"/> \$50 Printmaker	for individual printmakers
<input type="checkbox"/> \$65 Art Organisation	for organisations and institutions
<input type="checkbox"/> \$25 Concession 1	for students
Studying at:	
Student ID number:	
<input type="checkbox"/> \$25 Concession 2	for Health Care Card holders
CRN number:	

**How to pay:** PAWA's preferred method of payment is by direct deposit.

<input type="checkbox"/> Direct Deposit to PAWA: BSB 306 047 ACC 045 8738 Give Surname & first initial as reference	
<input type="checkbox"/> Post cheque to PAWA, P O Box 6, Nedlands, WA 6909	
<input type="checkbox"/> Visa Payment or <input type="checkbox"/> Mastercard Payment	
Name on card:	
Card Number:	
Expiry:	CVC:

Printmakers' Association of Western Australia (PAWA) is a not for profit charity organization  
ABN 38045319841 Studio at Tresillian Arts Centre, Nedlands, Perth, WA.



# Thank you to our sponsors

## GENERAL:

Future Engineering

Phone: 08 9470 3540

Email: [info@futureeng.com.au](mailto:info@futureeng.com.au)

<http://futureeng.com.au>

morrisonart

Contact: Liz Morrison

[www.facebook.com/printingfun4u/](http://www.facebook.com/printingfun4u/)

Phone: 0448 087082

Minuteman Press Fremantle

[www.minutemanfremantle.com](http://www.minutemanfremantle.com)

Phone: (08) 9433 4599

Rosily Vineyards

Margaret River

[www.rosily.com.au](http://www.rosily.com.au)

Talison Lithium

[www.talisonlithium.com.au](http://www.talisonlithium.com.au)

## ART SUPPLIES

Jacksons Drawing Supplies Pty Ltd

[www.jacksons.com.au](http://www.jacksons.com.au)

PAWA members receive a 15% discount

Oxlades Art Supplies

[www.oxlades.com.au](http://www.oxlades.com.au)

PAWA members receive a 15% discount

## FRAMING

Art Framers Gallery (Claremont)

[www.artframers.com.au](http://www.artframers.com.au)

PAWA members receive a 20% discount

Quattro Framing

124 Wellington St, Mosman Park WA 6012

Phone: (08) 9293 1011

