

PAWA Newsletter

February/ March 2018



Think Big!



PRINTMAKERS' ASSOCIATION OF WESTERN AUSTRALIA

PAWA is a not for profit organization for printmakers in Western Australia.

Our committee is made up of PAWA members who volunteer their time and expertise.

PATRON

LEON PERICLES

COMMITTEE 2017 -2018

PRESIDENT

ELIZABETH MORRISON

TREASURER

MICHELLE WELLS

SECRETARY

CLARE MCCARTHY

MINUTES SECRETARY

SHELLEY COWPER
PETRA SARA

STUDIO CO-ORDINATORS

ROSEMARY MOSTYN
BETH PORTER

GENERAL COMMITTEE

MONIQUE BOSSHARD-CURBY
HILDA KLAP

CONSULTANT

DALLAS PERRY

WWW.PAWA.ORG.AU

CONTENTS:

PAWA Committee, 2
PAWA members information, 2-3
Housekeeping notes, 4-5
Please renew, 5
Studio Notes, 6-7
Hard Pressed at DADAA , 8-9
PAWA Print Collection: Jon Tarry, 10-11
Skill Share Saturdays, 12
Collaborative Project, 13
Framing – what is acceptable, 14-15
Exhibitions, 16
Linocut Workshop in Ubud, Bali, 17
Artist Opportunities, 18-20
Pawa exhibitions, 20
Overwintering project. 21
Press Gang Entry forms, 22-24
Membership form, 25
Thank you to our sponsors, 26

COVER PHOTO:

Lizzy Robinson, the founder of Hard Pressed, holding one end of a print by PAWA member Peter Lanzon at the DADAA Hard Pressed Workshop in Fremantle, 31 January 2018. The mega sized woodcuts were printed using a steamroller. See more on page 8-9.
Photo by Elizabeth Morrison.

CONTACT DETAILS:

Email: admin@pawa.org.au

Website: www.pawa.org.au

Post: P O Box 6, Nedlands, WA 6909

Phone: Elizabeth Morrison, President 0448 087082

Studio: Tresillian Arts Centre, 21 Tyrell St, Nedlands
(no post to this address)



PAWA Members Skill Share: Saturday 3 February 2018.

WELCOME TO NEW MEMBERS:

Selina Marciano, Anna Willoughby, Junko Kitamura (re-joining), Marcia Thornander (re-joining)
Thank you to all members who have renewed their membership.

PRESS HIRE:

As a PAWA member you can use our two presses and enjoy working in the PAWA Studio at Tresillian Art Centre, 21 Tyrell St, Nedlands.

To book your exclusive use of the studio, email admin@pawa.org.au with Studio Hire as the subject. Cost is \$15 for half a day (4 hours), \$25 for a full day. If it's your first time at the studio, you need to have a 10 minute induction on site. Studio Mentors available – see page 6 and 7 of this newsletter.

You can also contact our Studio Coordinators Beth Porter 0406 968731 or Rosemary Mostyn 0403 466529

SKILL SHARE SATURDAYS:

Once a month we get together informally to share our knowledge and experience and maybe try something new.

Skill shares are usually held on the first Saturday of the month from 10am to 2pm. Come for all or part of a session. Watch out for emails and in the newsletter for information about themes and demos.

Bring \$15 and lunch. Tea and coffee provided. Some materials provided. As always in the studio wear closed in shoes for safety reasons.

Skill Shares are held in the PAWA studio, Tresillian Art Centre, 21 Tyrell St, Nedlands.

DISCOUNTS FOR MEMBERS:

Art Framers Perth (Claremont) 20%
Jacksons Drawing Supplies 15%
Oxlades Art Supplies 15%

Housekeeping Notes



President Elizabeth Morrison with her friend Pablo

Dear fellow printers,

After a relaxing summer break we're now gearing up for our annual PAWA members' exhibition.

We have chosen the title **'Press Gang'** to infer the fellowship we find as a group creating fine art prints.

As members of PAWA part of the mandate is that all works exhibited must have an element of hand printing. This of course leaves many options available and many traditional and contemporary techniques will be on display.

We look forward to an interesting exhibition that will showcase the amazing print talent within our ranks from newer members to the most experienced.

As you are probably aware from our emails, this year the exhibition will be held at Zig Zag Gallery in Kalamunda. The exhibition will be open to the public from Friday 18 May to Mon 4 June inclusive.

We look forward to putting on a wonderful show and as always with PAWA an extraordinary opening.

The opening event will be on Sunday 20th May. Please join us from 2 to 4 pm to meet your fellow printmakers.

All work entered in Press Gang needs to be framed to a professional standard. Dallas Perry who is a consultant to the PAWA Committee has written a useful article on framing which is included in this newsletter.

We are also preparing for the PAWA Contemporary Print Media Awards that will open on Friday 10 August at the Moores Building Contemporary Art Gallery. Framed, unframed and 3D works will be eligible for entry. All kinds of print processes are acceptable although there must have an element that is hand pulled. Entry forms will be emailed to members when available.

Our last and next couple of Skill Share sessions are focusing on our collaborative piece "Banquet" to display at Moores. This piece will not be part of the judging and any proceeds from it will go to PAWA. It will be a fun piece comprising life size and shaped plates of the banquet items that most inspire and excite you.

Feel free to bring a plate to our table, and experiment with ways to bring your passion for your plate alive. Materials do not need to be archival for the collaborative piece. Prints will be in black and white with muted colour added using chine collé or a similar technique.

Get busy. You can enter 3 prints in Press Gang and 2 in the Print Media Awards.

Happy happy printing !!!

Most kind regards,

Elizabeth Morrison, PAWA President

Be part of PAWA!

Please renew your PAWA membership

Memberships expired on 31st January. Thank you if you have already renewed. To keep receiving this newsletter and enter the Press Gang exhibition you need to renew your membership.

As a PAWA member you have the opportunity to:

- meet other printmakers
- participate in PAWA exhibitions including Press Gang
- participate in monthly skill share sessions
- take part in member only workshops (fee applies)
- book the PAWA studio at Tresillian for sole or group use
- be part of PAWA only visits to special print collections
- receive discounts of 15% at Oxlades and Jacksons art supplies and 20% discount at Art Framers Claremont
- receive a bi monthly newsletter and emails about printmaking in WA.

The membership form has been emailed to all members and is in this newsletter

Studio Notes

Did you know that all members have access to the PAWA studio at the Tresillian Art Centre in Nedlands?

\$25 a day or \$15 half day
\$40 a day or \$20 half day with mentor

To book email admin@pawa.org.au
or call our Studio Coordinators

Rosemary 0403 466 529 or Beth 0406 968731

Would you like a Print Mentor?

By Beth Porter and Rosemary Mostyn, PAWA Studio Coordinators

We both just wish to encourage all our members to make good use of the studio at Tresillian.

Recently the committee have been thinking of ways we can assist our members (particularly our newer members) in using the studio to work on their print projects.

It can feel a little overwhelming using the press or trying to perfect a print technique alone. As not everybody can make it along to our skill share sessions we thought we'd offer support.

A Print Mentor would offer all our members the opportunity to get help and advice before they felt ready to 'go it alone' in hiring the studio. This could be helpful in mastering how to 'set the press' or how to make a registration...or it could be about having someone nearby to give some technical advice while you are printing.

Even if you haven't completed the 10 minute studio induction, we encourage you to book the studio, and request an experienced printmaker to be on-hand during your visit. When booking, say you require 'Studio hire with mentor' and one of our committee members will volunteer to attend the studio during that time slot. If you want to get together with a friend, simply say that you request 'Studio hire for 2 with mentor'.



Would you like a Print Mentor? continues...

As there are many techniques in printmaking, hiring the studio with support, will give you an opportunity to brush up on your studio practice and gradually build the confidence you need before venturing into the studio on your own.

We have also recently added a checklist on the back of the door to remind us all of what to do when we have finished using the press. Always loosen the press and please spread the press blanket over the rollers to air and cover the press with the sheet or checked blanket.

Always remember, the studio is shared by all members and we hope you will be considerate and leave it tidy for the next printmaker using it.

Happy Printing,

Beth and Rosemary

STUDIO TIPS AND HELPFUL HINTS

- Are you aware of the fire exit and location of the first aid kit? The first aid kit is hanging directly under the rollers and brayers rack. In the event of a fire emergency, exit through the main door next to the Tresillian Centre's office. In an emergency or if you are unsure about anything, please ring one of the following PAWA members...Liz Morrison (president) :0448 087 082, Rosemary (office co-ordinator) :0403 466 529, or Beth Porter (office co-ordinator) :0406 968 731.
- Protect yourself from toxic substances...Protective clothing and good ventilation, are a must. Face masks, safety glasses, and gloves are available for your use...thick work gloves when filing and thin disposable gloves when handling inks.
- Do not smoke in the print room or eat directly over the working areas.
- Practice safe use of solvents and wear protective clothing, respirator mask and closed in shoes.
- Do not use any tools or equipment without having received proper instruction.
- When hiring the press...sign in at the front office and again inside the print studio in the PAWA studio book. Read and observe all the guidelines posted up on the walls of the studio and observe the nominated uses for each area of the studio.
- When leaving the studio, make sure you are courteous and considerate by leaving the studio and equipment in a clean and tidy way. Bins should be emptied and replaced with a new bin bag, lights, fans and heaters should be turned off and the sliding door and main door locked when you leave. If the paper soaking tubs or kettle were used, these need to be emptied and put away.
- To borrow a book...record the title, your name and the date in the PAWA book inside the bookshelf.

HARD PRESSED @DADAA Fremantle



PAWA members were part of the Hard Pressed workshops held at DADAA between 10 January and 4 February 2018. The workshops were for artists with and without disability, in a shared environment of diversity and social inclusion.

On 31 January the mega sized prints were printed with the help of a steamroller. There were large single plate prints and a long print made up of multiple plates which is shown here.



HARD PRESSED is an experimental community arts project spanning WA and the NT. Community groups, artists and members of the public create large scale woodcuts. These are then printed with a steamroller in celebration of unconventional print-making.

It was established by artist Lizzy Robinson in Geraldton in 2016. Lizzy was obviously delighted with the results from these workshops as our newsletter cover shows!

Photos this page by Rosemary Mostyn



HARD PRESSED @DADAA Fremantle

The **HARD PRESSED** exhibition took place in the gallery at DADAA which is in the beautifully restored Fremantle Boys School at 92 Adelaide St. *Photos this page by Elizabeth Morrison.*

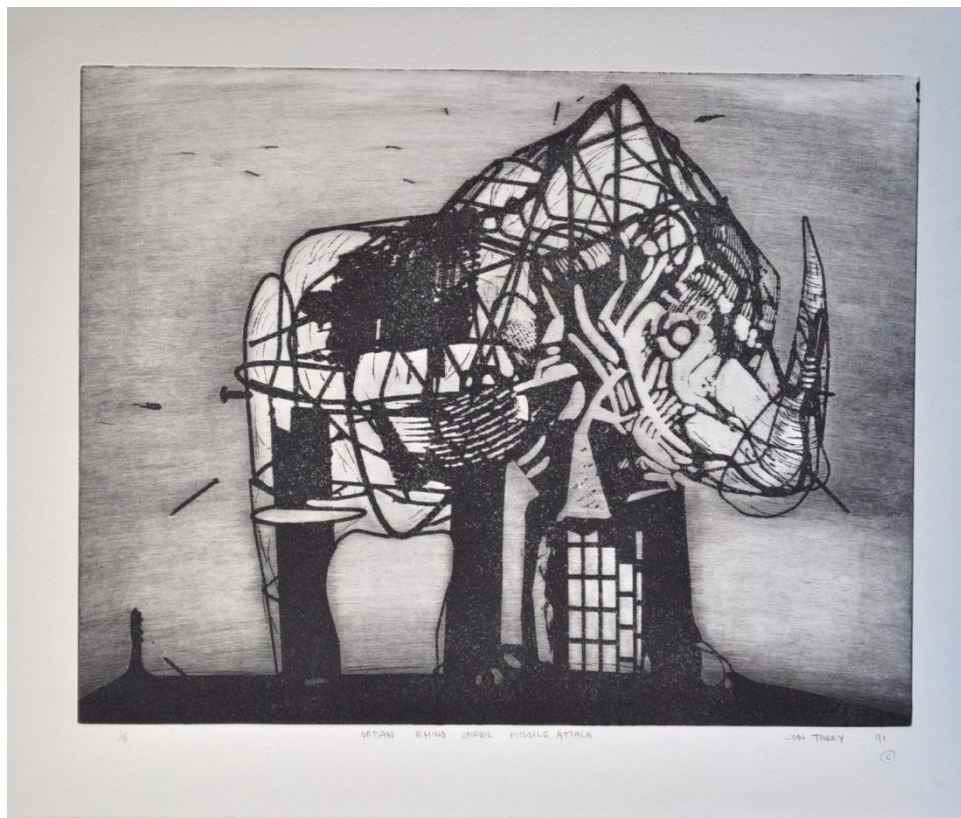


DADAA is a leading arts and health organisation that creates access to cultural activities for people with disability or a mental illness. DADAA offers targeted programs that include a broad range of traditional and new media projects in Western Australian communities. The programs range from entry-level workshops for those with no arts experience to professional mentorships for advanced artists. Exhibition or broadcast of works is an outcome of most programs. DADAA has three arts and community centres located in Fremantle, Midland and Lancelin. From their website www.dadaa.org.au.

PAWA Print Collection

Beth Porter, Studio Coordinator

*We feature prints from our collection in each newsletter.
If you have any comments please email them to admin@pawa.org.au*



Urban Rhino Under Missile Attack by Jon Tarry, 1991.

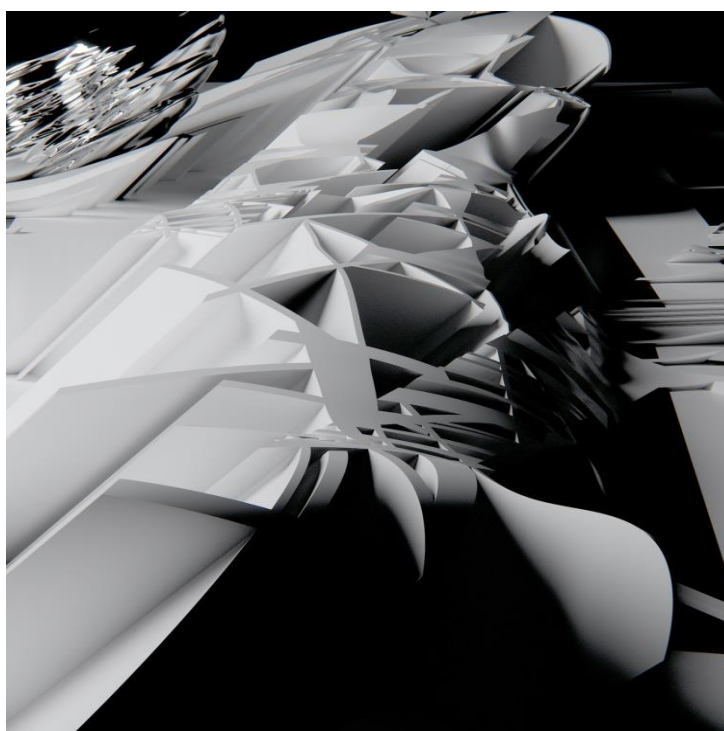
This print by Jon Tarry from our collection is signed 1/6. The image for this print was partially developed from an X-ray of sculpture made in the UWA Department of Human Anatomy with Professor Nick Milne. I've read that Jon's work is an investigation into geopolitical space and that he creates art as a way of testing ideas about the prosaic, political and poetic. He has suggested to me that this image shows a structure being attacked, whether it is through an act of aggression, such as demolition, or a thrust attack of ideas. I encourage our members to take a look at this print in person, along with many other interesting prints, in the folio within our studio at Tresillian.

Jon Tarry now works as a visual artist, with sculpture, drawing, painting, sound and film and possesses an acute interest in the merging of art and architecture, finding the act of generating his work is just as significant as the work itself. He has encouraged me to think about the connections between sculpture and printmaking, and how sculptors, and also architects, often work with print methods and print processes as early references in their work. If you look at Jon's web site under the portfolio section called 'drawings' you will see some great examples of this and with my interest in sculpture and jewellery, I also

found it interesting to see his 'global TarrMac' project (with miniature handmade silver 'Airport runway' sculptures that can be worn or collected). He says printmaking can be seen as a kind of blue print and a lot of the commission works mentioned on his site have a mode of 'blue print' about them.

Jon has completed over 42 public and numerous private art commissions in Australia, the USA, Europe and the Middle East and has participated in many group exhibitions including Venice Biennale of Architecture 2008, 2010 and 2012. He is also widely published and is currently an Associate Professor/Honorary Fellow at the UWA.

In 2017 Jon was chosen by an international selection panel, to show at the Los Angeles Centre for Digital Art with a show titled 'Luminate' making this Jons' eighth solo show at LACDA in the past decade, and all of which ,in some part, "emerged out of the print studio". His public works can be seen across Australia. 'Blue Shard' and 'Magenta fold' in Canberra and closer to home from Albany to Port Hedland and scattered throughout Perth. Currently, he is very involved with a large-scale water sculpture project in Yagan Square (a collaboration with ASPECT studio). Keep a look out for 'Convergence' an 11m high sculpture outside the new Perth Stadium. His beautiful design is said to have captured both the flow of the Swan River nearby and the fearless energy of a football game.



Fact-ure

Digital Print on Archival Paper 50cm by 50cm.
Collection of Los Angeles Centre for Digital Art. 2017

Jon Tarry's website is www.jontarry.com

PAWA Skill Share Saturdays

10am to 2pm, PAWA Studio, usually the first Saturday every month



PAWA skill share in February formulated the beginnings for our collaborative piece for the biennial 2018 Contemporary Print Media Awards to be held at Moores Contemporary Building Art Gallery, Fremantle in August. You are all invited to bring a plate. See next page for more information.

At the March skill share we will continue developing our plates for the collaborative work. If you weren't at February's skill share you can still come along and start your own plate to add to this collaborative work which will continue to evolve over the next few months.

Next Skill Shares: 3 March and 7 April

*Come for all or part of the session 10 am to 2pm. Wear closed shoes and maybe an apron in the studio.
Cost \$15. Some materials free with good paper for printing available to buy.
Free tea and coffee, nibbles. Bring your own lunch.*

Banquet: please bring a plate

Collaborative Project 2018



Monique Bosshard-Curby who is leading the collaborative project and a picture of our high tea table from the PAWA AGM which inspired this project.

Feel free to bring a plate to our table, and experiment with ways to make it look delicious. Materials do not need to be archival. Prints are to be in black and white with muted colour added using chine collé or a similar technique.

This fun collaborative piece will be made up of life size and shaped plates of the food items – savoury or sweet – suitable for a high tea or banquet. Find food that most inspires and excites you.

The following is the starting point for this project written by Monique Bosshard-Curby and discussed with the PAWA Committee and Skill Share participants. The project will no doubt evolve over the next few months. (Note that you don't have to come to skill share to contribute to the collaborative project).

Choose a plate as imagery, either from our banquet, or your own favourite dish (from nature or photo) and make a printing plate from your plate. Print on any suitable paper (light colour). Show what makes your favourite dish - whipped cream, glossy chocolate, shiny cutlery, tea cups, cupcakes with icing... A festival of marks and surface textures and papers that will work to your idea. (Also think of different surfaces to print on).

This project will require some time to assemble to a composition that works. Preferably people would submit two prints for a repeat here and there. Prints will be ripped-edged, or cut out and joined. Rectangles and hard edged won't lend themselves so much to this assemblage of goodies.

The advantage is that everybody can print anytime and anywhere with any imagery that belongs on a table similar to our AGM one!

Banquet will be assembled and displayed at the **PAWA CONTEMPORARY PRINT MEDIA AWARDS 2018** see page 20 of this newsletter for details. Any proceeds will go to PAWA.

Framing – what is acceptable for a professional artist exhibition

By Dallas Perry

Since writing this article in 2015, it has been re published numerous times in the PAWA circle as a reminder of how we need to be mindful of all aspects of our professional practice, not just relying on the strength of the prints we produce. I have updated and adjusted some of the information below, but much of it is still relevant and a good reminder of best practices.

For any artist getting work framed appropriately for exhibition always causes some anxiety. What colour frame, float mount or not, how to sign your work, how do I price my work?

The best advice I can offer is to find a framer that you can communicate with, and someone who is willing to spend time with you to find the right combination for your work. The great thing of being a PAWA member, is that you have access to a large network of people to ask – who do they use, what does there work look like when framed, is the cost reasonable?

Framing work for a group show- play it safe go minimal

I recommend selecting 'neutral' framing, black, white, light timber or white wash frames, with a matt board that works with the tone of the work and frame. Choosing something simple makes it easier for buyers to imagine how your work will fit into the décor they already have in their house. If it is a very ornate frame with bold matt colours, this can be a deterrent for the buyer, and it can also distract from the qualities of the work you are framing.

Most galleries and museums, frame in plain light timber or white frames, with a light coloured matt board – after all they want to show case the work not the framers handy work.

Framing your own work – acid free all the way

Framing your own work, is not always the best option – but it is possible!

If you are re using a frame that was made by a professional framer, be careful when removing the backing, make sure that your hands are clean and grease free – you do not want to damage the internal mat boards or work.

If possible reuse the mat board inside, and use linen hinging tape or acid free tapes to delicately attach your work. Do not use masking tape – it perishes over time and your work will dislodge in the frame and will damage the work from the poor quality glue on the tape.

Cutting your own mat board is always tricky – make sure you have purchased an acid free mat board, and that you still cut the window with a 45 degree bevelled edge. It is the minor things that can really detract from your work.

Sealing the back of the frame is important.

Buyers and other artists look at the back of the frame as much as the front. Make sure you use acid free paper tape, and do it neatly. Don't over do the tape or it will look like a badly wrapped Christmas present.

Buying frames from shops such as Ikea or even Red Dot can be detrimental to your work and can be the cause if its rejection from any curated exhibition. Ikea frames often have badly mitred corners and poor hanging systems on the back that involve very soft but sharp wire.

This is not safe or secure – replace the string with D rings and or nylon cord. You also need to make sure that you work fits the frame, and none of it is cut off or that the work is not too small for the matt. Proceed with caution.

Signing your work – keep it neat and discrete!

It is always optional to sign the front of your work. If you do sign, make sure you use a HB or 2B pencil and use your best handwriting. Keep it neat and discrete!!! – remember it is about the work not how well you can flourish your signature on the front. Never use biro, try to avoid signing on the work or the mat board. If signing the work is going to detract from your work, then attach acid free paper to the back of the frame with the work details.

What price do I put on my work?

So many things to consider when doing this:

Have you sold similar works before (same technique and size), if so then you need to keep the price the same or a little higher.

How did you frame the work? If it is a cheap frame then take this into account when deciding how much you wish to sell for.

Do you want to sell the work or do you want to keep it? Price reasonably if you increase your chances of selling. Price it high, and you risk losing a buyer and putting your work out of reach. Personally I would rather my work was in someone else's home than in mine collecting dust.

Lastly, always look to your networks for advice and suggestions on suppliers, ways of framing, and pricing. I have found the skill sharing sessions at PAWA very useful for this problem solving. At the end of the day framing and pricing is very subjective – but take all of the above points into consideration and you will reach a professional standard.

Exhibitions

Email admin@pawa.org.au to have your exhibition included here. Deadline for the next newsletter is 20 April

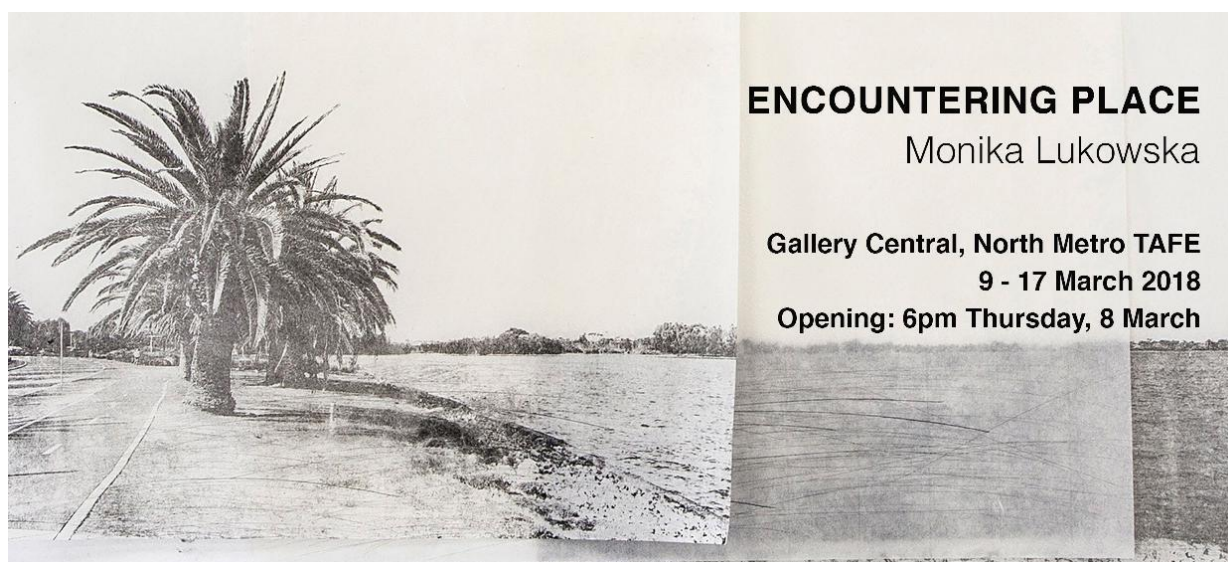
What are you doing this year? Please let us know when you are exhibiting and we can include it in the newsletter or email your invite out to our 150 members.

THE INAUGURAL COLLIE ART PRIZE

Congratulations to PAWA member Elmari Steyn who is a finalist.

The Collie Art Gallery has launched an ambitious biennial major art event, with the largest single art prize to be awarded throughout regional Australia of \$50,000. The inaugural CAP has attracted interest from top-class artists from across Australia, as well as arts lovers and collectors. Awards are being announced 2 March 2018.

An exhibition of the winners' and finalists' work is on show 10 am – 4 pm, seven days a week from 3 March until 15 April 2018. Entry fees apply. The Collie Art Gallery is situated at 134 Throssell Street, Collie, adjacent to the railway line near the Caltex Service Station.



Please join us for the opening of:

ENCOUNTERING PLACE
Monika Lukowska

The artworks were developed during Lukowska's practice-led research that explored the experience of place.

Exhibition opening: **6pm Thursday, 8 March**
To be officially opened by Dr Susanna Castleden and Dr Ann Schilo.

Exhibition continues: Monday – Saturday 9 – 17 March
10-4:30 weekdays, 12-4 Saturday
RSVP to: gallery@nmtafe.wa.edu.au
T: 94271318

Gallery Central, North Metro TAFE
12 Aberdeen St, Northbridge



I would like to acknowledge the financial support that I received during my research through Curtin Strategic International Research Scholarship.
Image: Monika Lukowska, Riverside Drive, 2017, lithograph, 64 x 73 cm.
Image courtesy of the artist.

Linocut workshop in Ubud, Bali

PAWA member Janette Trainer took part in the Linocut Workshop held in Ubud, Bali by Shana James. (PAWA member, seen here talking to the group)

Anticipation and excitement were the emotions experienced as I set off on this journey.

Flying into Denpasar, we were greeted by the driver from Arma Museum and Resort and then we were on our way. On the way to the resort we picked up two other participants from Kuta.

Once at Arma Resort the excitement grew as we met the other participants. Participants had flown in from all over Australia and a couple had come from Italy!

Shana and Ebony Postma (Shana's right hand women and social director) greeted us, gave us our beautiful Balinese woven box tool kit and made us feel welcome, as did the staff at Arma Resort.

During the week we were given tuition in the art of linocut. The lessons were flexible once we learnt the techniques, with Shana and Ebony there to answer any questions we may have. On the Wednesday we had a free day. Ebony had arranged for a few of us to go and attempt jewellery making at Chez Monique (this was a lot of fun!!!)

On some of the mornings people chose to get up early and to go to the Yoga Barn in Ubud. One morning we chose to walk the Campuhan Ridge Walk up to a lovely café through padi fields.

Often at night time we would get together and go to dinner in Ubud. Shana and Ebony knew of great places to. The first night was a welcome dinner and the last night we had a farewell dinner.

We had an amazing time! Shana gave us great tuition and I'm planning a return next year!

Words and photos by Janette Trainer



Artist Opportunities

Please go to the websites listed for more information on terms and conditions and to confirm closing dates.

VASSE ART AWARDS 2018

Vasse Primary School (WA)

14 – 21 APRIL

Awards up to \$8,000

Biennial Regional Art Awards open to established and emerging Australian artists. Funds raised from the exhibition support the Vasse Primary School.

ENTRIES CLOSE: THURSDAY 1 MARCH (Entries Limited to 260 artworks)

ENTRY FORM: vasseartaward.org.au

HUTCHINS AUSTRALIAN CONTEMPORARY ART PRIZE (HACAP)

Brook Street Pier, Hobart (TAS)

9 – 27 JUNE

Open Award (Acquisitive) \$20,000

3 Awards \$1,000 each

Biennial National Award open to all Australian artists working in multiple visual art forms and media

ENTRIES CLOSE: FRIDAY 2 MARCH

ENTRY FORM: artprize@hutchins.tas.edu.au

BEVERLEY ART PRIZE 2018 & 50TH ART EXHIBITION

Beverley Station Arts Gallery (WA)

29 MARCH – 2 APRIL

Several Categories incl Printmaking Prize \$1,000

Open to all WA artists.

ENTRIES CLOSE: FRIDAY 2 MARCH (Entry forms in PAWA studio)

Contact: Kathryn McClean (Exhibitions Secretary) Tel: 0427 464 050

EM: wk.mclean@bigpond.com (There are also some at the PAWA studio)

THE MANDORLA ART AWARD 2018 (FINALISTS EXHIBITION)

Turner Galleries, Perth (WA)

1 – 30 JUNE

MANDORLA AWARD: \$25,000 (ACQUISITIVE) SPONSORED BY ST JOHN OF GOD HEALTHCARE
(TOTAL PRIZE POOL \$37,000)

THEME: "AND THEN I SAW A NEW HEAVEN AND A NEW EARTH"

Entry is open to all Australian artists working in a range of mediums.

ENTRIES CLOSE: MONDAY 12 MARCH

ARTISTS NOTIFIED: MONDAY 16 APRIL

ENTRY FORM: www.mandorlaart.com/2018-award

ENQUIRIES: Kristy Gough curator@mandorlaart.com

MINNAWARRA ART AWARDS 2018

Greendale Centre, Armadale WA

12 – 27 MAY

Awards \$1,000 to \$5,000

Open to WA artists working in any medium.

ENTRIES CLOSE: FRIDAY 23 MARCH

ENTRY FORM: www.armadale.gov.au

NATIONAL WORKS ON PAPER 2018

Mornington Peninsular Regional Gallery (VIC)

20 JULY – 9 SEPTEMBER

Awards & Acquisitions up to \$50,000

Biennial exhibition supporting and promoting contemporary Australian artists working on or with paper.

ENTRIES CLOSE: FRIDAY 6 APRIL

ENTRY FORM: mprg.mornpen.vic.gov.au/nwop

STANTHORPE ART PRIZE 2018

STANTHORPE REGIONAL ART GALLERY (QLD)

Awards total \$40,000 incl. 1st Prize \$25,000

Open to national and international entries in 2D & 3D media

ENTRIES CLOSE: WEDNESDAY 4 APRIL

ENTRY FORM: stanthorpeartprize.org.au

QUERIES: artprize@srag.org.au

2018 CITY OF WANNEROO COMMUNITY ART AWARDS WA

Wanneroo Library & Cultural Centre, Wanneroo (WA)

12 MAY – 22 JUNE

Awards total \$16,800 incl. Acquisition Open Award \$7,500

Open to WA visual artists including works on paper

ENTRIES CLOSE: FRIDAY 6 APRIL (Max. No. Entries 230 received)

ENTRY FORM: www.wanneroo.wa.gov.au/awards

2018 HADLEY'S ART PRIZE

Hadley's Orient Hotel Gallery, Hobart (TAS)

21 JULY – 25 AUGUST

Open Acquisitive Award: \$100,000

Highly Commended & Peoples Choice Awards

Annual Landscape Prize in any medium (no photography). Open to Australian artists portraying the Australian landscape.

ENTRIES CLOSE: FRIDAY 18 MAY

ENTRY FORM: www.hadleysartprize.com.au

PREMIO COMBAT PRIZE 2018 (ITALY)

Held in Livorno, Italy and open to international artists. 80 finalists' works selected across 5 categories. Big opportunity for exposure internationally.

Awards to EUR 25,000

ENTRIES CLOSE: 14 APRIL 2018

ENQUIRIES: <http://premiocombat.it/en/>

CP2018: COMPACT PRINTS INTERNATIONAL PRINT EXHIBITION /EXCHANGE 2018 (QLD)

17 AUGUST-23 SEPTEMBER 2018

Biennial Exhibition/Exchange open to all Australian/International print media artists coordinated by Umbrella Studio Contemporary Art Gallery, Townsville, QLD.

REGISTRATION IS OPEN NOW

ENQUIRIES: www.umbrella.org.au/compactprints

ARTIST IN RESIDENCE PROGRAM 2018 (MELBOURNE, VIC)

Australian Print Workshop is seeking proposals from Artist/Printmakers resident outside Melbourne who wish to undertake a 3 week Artist Residency in September or October 2018.

Two residencies are currently available:

3 – 22 September and 1 – 20 October.

APPLICATIONS CLOSE: WEDNESDAY 30 MAY 2018

ENQUIRIES: www.australianprintworkshop.com

PAWA Exhibitions 2018

PRESS GANG: PAWA MEMBERS EXHIBITION 2018

ZIG ZAG GALLERY, KALAMUNDA CULTURAL PRECINCT, 50 RAILWAY RD, KALAMUNDA 6076

18 MAY – 04 JUNE

Annual exhibition open to PAWA members only. Enter up to 3 framed prints.

Fill in entry form, Supplier Details form and a Statement of Supplier form if you have no ABN. Then email or post to PAWA. The forms are on the next few pages.

ENTRIES CLOSE: FRIDAY 27 APRIL 5pm

PAWA CONTEMPORARY PRINT MEDIA AWARDS 2018

MOORE'S BUILDING, CONTEMPORARY ART GALLERY

46 HENRY ST, FREMANTLE

10 – 19 AUGUST

OPENING: FRIDAY 10 AUGUST 6 TO 8 PM

Showcasing the diversity of printmaking in WA, the awards exhibition is open to all WA artists. (2 prints can be entered). This well established, sponsored exhibition reflects the aims of PAWA to not only embrace new technologies but to also retain the skills of traditional printmaking techniques. This is the 29th Contemporary Print Media Awards.

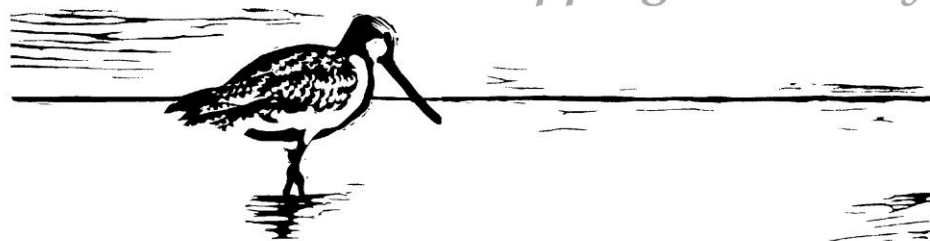
ENTRIES CLOSE: FRIDAY 20 JULY 5pm.

Entry forms available in March. They will be emailed to all PAWA members.



The Overwintering Project

Mapping Sanctuary



Call for participation

Kate Gorringe-Smith is a Melbourne-based printmaker who has devised and launched 'The Overwintering Project'. A previous role with the conservation organization BirdLife Australia left her with a great fascination for migratory shorebirds, and through this project Kate hopes to raise awareness about the importance of migratory bird habitats.

PROJECT DESCRIPTION:

"The Overwintering Project is an environmental art project inviting artists from Australia and New Zealand to visit, research, and respond to the unique nature of their local migratory shorebird habitat. Australia and New Zealand have over 100 internationally important shorebird overwintering sites. These sites are not interchangeable: each possesses a unique combination of physical and biological features that make it the perfect sanctuary for migratory shorebirds to return to year after year. "

PROJECT AIMS

- to raise awareness of Australia and New Zealand as the major destination for migratory shorebirds of the East Asian-Australasian Flyway, as they spend the greatest single portion of their migratory cycle on our shores (Sept./Oct. – April/May)
- to raise community and individual awareness of the intrinsic value and uniqueness of local shorebird habitat
- to map a personal response to the richness of our shore
- to link artists around Australia and New Zealand

PARTICIPATION IN WA:

Forrestdale and Thomsons Lakes just South of Perth are home to a significant population of migratory shorebirds which include Red-necked Stints, Sharp-tailed Sand-pipers and Curlews.

While you can email Kate directly (see project contact info) and participate independently I thought it might be good to organise an exhibition in Perth if there is enough interest. If you would like to be part of a WA contingent please email shelleyc@iinet.net.au.

Shelley Cowper, PAWA Committee member

overwinteringproject@gmail.com

www.theoverwinteringproject.com

Press Gang



PAWA Members Exhibition 2018

Venue: Zig Zag Gallery, Kalamunda Cultural Precinct, 50 Railway Rd, Kalamunda WA 6076

Entry form due: Friday 27 April by 5pm
 Deliver prints: Tuesday 15 May 9am to 1pm
 Exhibition opening: Sunday 20 May 2 to 4pm
 Exhibition dates: 18 May to 4 June weekdays 9 - 4, weekends/public holidays 10 - 4
 Collect prints: Tuesday 5 June 9am to 1pm

Please fill out form, scan/take photo and email or post to PAWA. Thank you for your participation.

admin@pawa.org.au P O Box 6, Nedlands, WA 6909 Elizabeth Morrison, President, 0448 087082

Your Contact Information:

Name	
Email	
Mobile	

Prints: You can submit up to three framed prints. See terms and conditions for details

	Title	Medium/print process	H x W cm	Price
1				
2				
3				

How to pay: PAWA's preferred method of payment is by direct deposit.

Entry fees are: \$15 for 1 print or \$25 for 2 prints, or \$35 for 3 prints.

<input type="checkbox"/> Direct Deposit to PAWA: BSB 306 047 ACC 045 8738 Give Surname & first initial as reference	
<input type="checkbox"/> Post cheque to PAWA, P O Box 6, Nedlands, WA 6909	
<input type="checkbox"/> Visa Payment or <input type="checkbox"/> Mastercard Payment	
Name on card:	
Card Number:	
Expiry:	CVC:

Printmakers' Association of Western Australia (PAWA) is a not for profit charity organization
 ABN 38045319841 Studio at Tresillian Arts Centre, 21 Tyrell St, Nedlands, Perth, WA.

TERMS and CONDITIONS OF ENTRY:

1. Entrants must be a current member of PAWA. Membership information is at www.pawa.org.au
2. Your prints must have been produced in the last 2 years.
3. Your prints must be framed to a professional standard and ready to hang. (eg. D rings and picture cord – no wire please).
4. Maximum size is 1 metre width and height including the frame.
5. 3D works (eg artist books) are acceptable: please contact PAWA to discuss your display requirements.
6. Label your prints clearly on the back/ bottom right hand corner with: Artist, Mobile, Title, Medium, Price
7. Closing date for entry forms and fees is 5pm on Friday 27 April. Late entries will not be accepted.
8. Entry fees are: \$15 for 1 print or \$25 for 2 prints, or \$35 for 3 prints.
9. A 30% commission on sales applies which goes to the Zig Zag Gallery.
10. Zig Zag Gallery requires a Supplier Details form to be filled in by each exhibitor (to enable payment if your print sells). If you do not have an ABN you must also fill in a Statement of Supplier form (for tax reasons). These will be emailed to members with the Press Gang entry form. All forms are also in the PAWA Feb/ March newsletter.
11. The PAWA Committee has the right not to hang work if the conditions of entry are not met or the prints submitted are in some way considered unsuitable.
12. Please deliver prints to Zig Zag Gallery on Tuesday 15 May 9am to 1pm. Please email PAWA if you need assistance with this.
13. Prints may not be removed prior to the close of the exhibition.
14. Observance of copyright laws is the responsibility of the artist.
15. All care will be taken in handling and hanging work, but PAWA accepts no liability for damage.
16. Collect your prints on Tuesday 5 June 9am to 1pm. PAWA accepts no responsibility for uncollected work. Please email PAWA if you need assistance with this.

Come and meet other PAWA members at the opening
Sunday 20 May 2 to 4pm



Creditor/ Supplier Details

Creditor/Supplier
Name: _____

Contact Name: _____

Position: _____

ABN Number: _____

Creditor/Supplier Registered for GST: ☐ Yes ☐ No

Postal Address: _____

Postcode: _____

Phone: _____

Fax: _____

Bank Account for payment via Direct Credit

Account Name: _____

Bank: _____

Branch: _____

BSB: _____

			-			
--	--	--	---	--	--	--

Account Number: _____

Remittance Advice:

Email address for Remittance only: «Email»

Remittance Advice will only be sent if an email address is supplied.

Email address for Quotations/Notifications/Purchase Orders only:

«Email»

Supplier Authorisation

PLEASE SIGN FORM

☐ I acknowledge I have read and agree to comply with City of Kalamunda's General Conditions of Contract for the Purchase of Goods and Services as provided www.kalamunda.wa.gov.au

☐ I agree to send **all** invoices to enquiries@kalamunda.wa.gov.au

Please note this if the form is returned unsigned or incomplete, it will be rejected.

Name: _____

Signature: _____

Date: _____

Please return the completed and signed form to:

Email: enquiries@kalamunda.wa.gov.au

Or

City of Kalamunda (08) 9293 2715
Accounts Payable, PO Box 42, KALAMUNDA WA 6926



Australian Government
Australian Taxation Office

Statement by a supplier

Complete this statement if the following applies:

- you are an individual or a business
- you have supplied goods or services to another enterprise (the payer), and
- you are not required to quote an Australia business number (ABN).

HOW TO COMPLETE THE STATEMENT

- Print clearly in BLOCK LETTERS using a black pen only.
- Use BLOCK LETTERS and print one character in each box.

S	M	I	T	H		S	T								
---	---	---	---	---	--	---	---	--	--	--	--	--	--	--	--

- Place χ in all applicable boxes.

➤ Payers can check AEN records of suppliers by visiting **abr.business.gov.au** or phoning **13 72 26** 24 hours a day, 7 days a week.

Section A: **Supplier details**

Your name

[illegible]

Your address

[illegible]

Suburb/town

State/territory

Postcode

[illegible]Reason/s for not quoting an ABN Place ☒ in the appropriate box/es.

- ☐ The payer is not making the payment in the course of carrying on an enterprise in Australia.
- ☐ The supplier is an individual aged under 18 years and the payment does not exceed \$350 a week.
- ☐ The payment does not exceed \$75, excluding any goods and services tax (GST).
- ☐ The supply that the payment relates to is wholly input taxed.
- ☐ The supply is made by an individual or partnership without a reasonable expectation of profit or gain.
- ☐ The supplier is not entitled to an ABN as they are not carrying on an enterprise in Australia.
- ☐ The whole of the payment is exempt income for the supplier.

The supplier is an individual and has given the payer a written statement to the effect that the supply is either:

☐ made in the course or furtherance of an activity done as a private recreational pursuit or hobby, or

☐ wholly of a private or domestic nature (from the supplier's perspective).

Section B: **Declaration**

For information about your privacy, visit our website at ato.gov.au/privacy

Under pay as you go (PAYG) legislation and guidelines administered by us, the named supplier is not quoting an ABN for the current and future supply of goods or services for the reason or reasons indicated.

Name of supplier (or authorised person)

[illegible]

Signature of supplier (or authorised person)

--	--

Daytime phone number

[illegible]

Date

Day

Month

Year

		/			/				
--	--	---	--	--	---	--	--	--	--

! Penalties apply for deliberately making a false or misleading statement.

☐ Do not send this statement to us.

Give the completed statement to any payer that you are supplying goods or services to. The payer must keep this document with other records relating to the supply for five years.

Membership 2018

31 Jan 2018 to 31 Jan 2019



Being part of PAWA includes opportunities to exhibit, discounts at art suppliers and framers, participation in members only skill shares and workshops, access to the PAWA studio plus newsletters and email updates on printmaking in WA and more. Join and enjoy meeting printmakers and learning new skills.

Please fill out form, scan/take photo and email or post to PAWA. Thank you for joining PAWA.

admin@pawa.org.au P O Box 6, Nedlands, WA 6909 Elizabeth Morrison, President, 0448 087082

Your Contact Information: if renewing and details are unchanged tick here ☐

Name	
Email	
Address	
Post code	
Mobile	
Other phone	
Website	

Membership: Please tick your type of membership and provide details as needed:

<input type="checkbox"/> Renewal	
<input type="checkbox"/> New Member	
<input type="checkbox"/> \$50 Printmaker	for individual printmakers
<input type="checkbox"/> \$65 Art Organisation	for organisations and institutions
<input type="checkbox"/> \$25 Concession 1	for students
Studying at:	
Student ID number:	
<input type="checkbox"/> \$25 Concession 2	for Health Care Card holders
CRN number:	

How to pay: PAWA's preferred method of payment is by direct deposit.

<input type="checkbox"/> Direct Deposit to PAWA: BSB 306 047 ACC 045 8738 Give Surname & first initial as reference	
<input type="checkbox"/> Post cheque to PAWA, P O Box 6, Nedlands, WA 6909	
<input type="checkbox"/> Visa Payment or <input type="checkbox"/> Mastercard Payment	
Name on card:	
Card Number:	
Expiry:	CVC:

Printmakers' Association of Western Australia (PAWA) is a not for profit charity organization
ABN 38045319841 Studio at Tresillian Arts Centre, Nedlands, Perth, WA.

Thank you to our sponsors

GENERAL:

Future Engineering

Phone: 08 9470 3540

Email: info@futureeng.com.au

<http://futureeng.com.au>

morrisonart

Contact: Liz Morrison

www.facebook.com/printingfun4u/

Phone: 0448 087082

Minuteman Press Fremantle

www.minutemanfremantle.com

Phone: (08) 9433 4599

Rosily Vineyards

Margaret River

www.rosily.com.au

Talison Lithium

www.talisonlithium.com.au

ART SUPPLIES

Jacksons Drawing Supplies Pty Ltd

www.jacksons.com.au

PAWA members receive a 15% discount

Oxlades Art Supplies

www.oxlades.com.au

PAWA members receive a 15% discount

FRAMING

Art Framers Gallery (Claremont)

www.artframers.com.au

PAWA members receive a 20% discount

Quattro Framing

124 Wellington St, Mosman Park WA 6012

Phone: (08) 9293 1011

