

PAWA Newsletter

April—May 2022



Sue shows Style



PRINTMAKERS' ASSOCIATION OF WESTERN AUSTRALIA

PAWA is a not for profit organization for printmakers in Western Australia.

Our committee is made up of PAWA members who volunteer their time and expertise.

PATRON

LEON PERICLES

COMMITTEE 2021-2022

PRESIDENT

ELIZABETH MORRISON

TREASURER

CAROLINE HARTE

SECRETARY

HAYA HAGIT COHEN

GENERAL COMMITTEE

AILEEN HOATH (MEMBERSHIP
COORDINATOR)

PETRA SARA (STUDIO
COORDINATOR)

PENNY HUDSON (STUDIO
COORDINATOR)

SHELLEY COWPER

MARA PELSS

ELENA RAYNER

ISAAC HUGGINS

WWW.PAWA.ORG.AU

CONTENTS:

PAWA committee,2
PAWA members information,3
Housekeeping notes,4
Jane Button Workshop,5
Skill share,6
Monika Lukowska at MJAC,7
Exhibitions, 8-11
Artists Opportunities,12-13
Thank you to our sponsors,14

COVER PHOTO :

Past President Sue Marshall (right) demonstrating inking techniques at March skill share to new member Wai Wah Lam.
Photo: Elizabeth Morrison.

CONTACT DETAILS:

Email: admin@pawa.org.au

Website: www.pawa.org.au

Post: P O Box 6, Nedlands, WA 6909

Phone: Elizabeth Morrison, President 0448 087082

Studio: Tresillian Arts Centre, 21 Tyrell St, Nedlands
(no post to this address)

Newsletter edited by Elizabeth Morrison.

Facebook: Elizabeth Morrison, Petra Sara and Penny Hudson.

Instagram: PAWA Committee.

Web Page Directory: Cameron Kneen.

PAWA Rules of Association are available at www.pawa.org.au.



DEN SCHEER WITH ONE OF HER PHOTO LITHOGRAPHS AT APRIL SKILL SHARE. PHOTO: ELIZABETH MORRISON.

PRESS HIRE:

Did you know that all members have access to the PAWA studio at the Tresillian Art Centre in Nedlands? Enjoy exclusive use of the studio or get a small group together. If it's your first time at the studio, you need to have a 10 minute induction on site. Studio Mentors are available: an experienced printmaker from the PAWA committee can assist you with your printmaking in the PAWA studio.

\$25 a day or \$15 half day

\$35 a day or \$25 half day with a mentor

\$100 for block booking of 10 half days. Prepaid and to be used within 6 months of purchase.

We are offering members the opportunity to make group bookings of the studio at a reduced rate.

\$10 per person half day

\$20 per person full day

All people using our studio must be PAWA members and inducted into how to use the studio.

***MASKS AND PROOF OF VACCINATION ARE CURRENTLY REQUIRED TO ENTER TRESILLIAN.**

To book email Petra at petrasara11@gmail.com or Penny at penny.hudson@gmail.com

SKILL SHARE SATURDAYS:

The number of participants at skill share has been limited to 12.

We advise you register to ensure your place.

The cost per session will increase to \$20 per session to cover extra costs PAWA will have to pay to hold these. We are sure there is much more printmaking fun to be had.

DISCOUNTS FOR MEMBERS:

Art Framers Perth (Claremont) 20% show your membership card

Jacksons Drawing Supplies 15% show your Jacksons card

Oxlades Art Supplies 15% show your membership card

Housekeeping notes

Hi Printmakers,

It was a lovely surprise to see past president Sue Marshall at our March skill share. Sue was in Perth to meet her lovely new grand daughter and rejoined PAWA to be able to use our studio and attend skill shares. As usual she share her expertise and joy of printmaking. We look forward to catching up with her on regular trips back and perhaps even see a cross Tasman entry in Framed Unframed.

The call for entries for our 2022 Framed Unframed Members Exhibition has gone out. If you have printmaking friends who are not members but would like to be a part of the show I would advise them to join ASAP. We expect full entries and processing memberships and entry fees at the last minutes is not encouraged. Priority will be given to established members.

Our membership for 2022 is healthy with 125+ members and new ones trickling in. After receiving reminders those who have not rejoined have had their details archived, an email to admin@pawa.org.au will sort out any problems.

Our skill share sessions have been well attended and as stated elsewhere in the newsletter we have limited the number of participants to 12 so registration is desirable. The limit has been set both to comply with COVID restrictions and to ensure everyone has a comfortable working space. Thanks to the team who help set up and pack down after each session.

We have some lovely new rollers for you to enjoy should you wish to book the studio for your own use. The more we can put printmaking out there and visible the better.

We currently negotiating with Fremantle Arts Centre to transfer the Contemporary Print Media Awards from Oct 22 to Apr/May 23 and we anticipate a favourable outcome.

We have taken this decision to allow those committee members and members who are fully involved with tertiary art institutions to be able to input more as October is often a busy end of year time for them.

We continue to develop our progamme of workshops for PAWA members and you will receive emails as the dates are confirmed.

Thank you very much to the team who makes all the great things we do possible.

Elizabeth Morrison

President.



JANE BUTTON WORKSHOP FOR PAWA MEMBERS
SATURDAY MAY 2022 9AM—2PM
MAKE YOUR OWN PRINT STUDIO (ON A BUDGET)

There are limited places still available.

Jane will demonstrate a range of equipment and techniques to make prints at home.

Equipment, tea and coffee provided bring your lunch.

Tresillian Arts Centre requires proof of vaccination and masks.

Cost \$72. Register at pawa.org.au/Events

Photos: Courtesy of Jane Button.

Skill Share Saturdays

10am to 2pm, PAWA Studio. First Saturday of the month. Places limited to 12 , registration required.



Photos: Left: Den Scheer & Julie Fowell reveal their paper lithography. Right: Eunie Watson making a display of some of the photo lithographs from April skill share. Photos: Elizabeth Morrison.

Next Skill Shares: May 7th & June 4th.

Wear closed shoes and maybe an apron in the studio.

Cost \$20, direct deposit preferred. Some materials are free with good paper for printing available to buy.

Free tea and coffee, you may wish to bring your own mug. Bring your own snacks & lunch.

Held at the PAWA Studio, Tresillian Art Centre, Nedlands.

***We will advise you if COVID means we need to alter our plans.
MASKS AND PROOF OF VACCINATION ARE REQUIRED TO ENTER
TRESILLIAN.***

*In May Julie Fowell will be presenting "Drypoint, etching and printing
using thin sheet plastics"*

See the email sent to members for further details and registration.

In May we will also be celebrating Print Day in May.



MONIKA LUKOWSA WORKSHOPS MJAC

Dry Point with Chine Colle and Photo Lithography

In April WA PCA Rep Monika presented 2 half day workshops which were well attended, including by several PAWA members. Monika's workshops are always informative, fun and she gives great hands on instruction. Don't miss the opportunity to attend future workshops if you can.

Photos: Clockwise from Top Left: PAWA Members Eunie Watson, Sue Marshall, unnamed participant and Monika discuss the dry point and chine colle prints; Unnamed participant and Monika review her photo lithography; Dry point with chine colle by Sue Marshall.

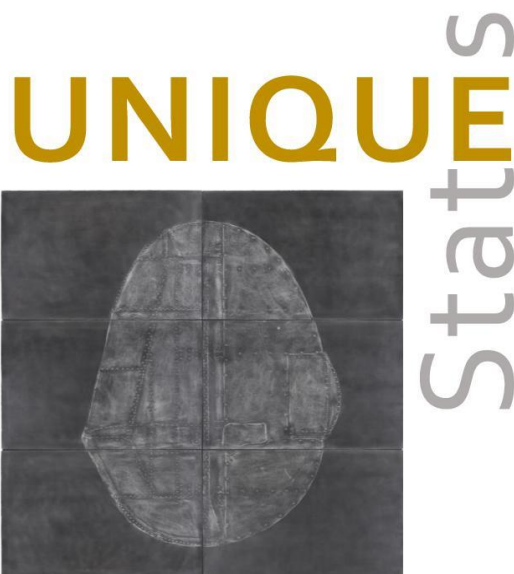
Photos: Elizabeth Morrison.

Exhibitions

Email admin@pawa.org.au to have your exhibition included here. Deadline for the next newsletter is 20th June 2022.

What are you doing this year? Please let us know when you are exhibiting and we can include it in the newsletter or email your invite out to our members.

Holmes à Court Gallery @ Vasse Felix presents ...



8 May – 18 September 2022

Unique States considers different states and the many meanings of the idea of the 'unique state'. It refers to a print making technique, to states of being, societal and environmental states and to our geographical state. The past three years have launched humanity into 'unique states' and Western Australia has become even more of a 'unique state' because of its position apart from the rest of Australia and the world. *Unique States* presents political and environmental realities, as much as flights of fancy, taking viewers through a variety of unique states via the medium of print.

ARTISTS

Susanna Castleden, Jo Darvall, Valdene Diprose, Clyde McGill, Harvey Mullen, Sue Starken, El mari Steyn, Perdita Phillips

To be officially opened by JANET HOLMES à COURT AC

11.00am | Sunday, 8th May 2022

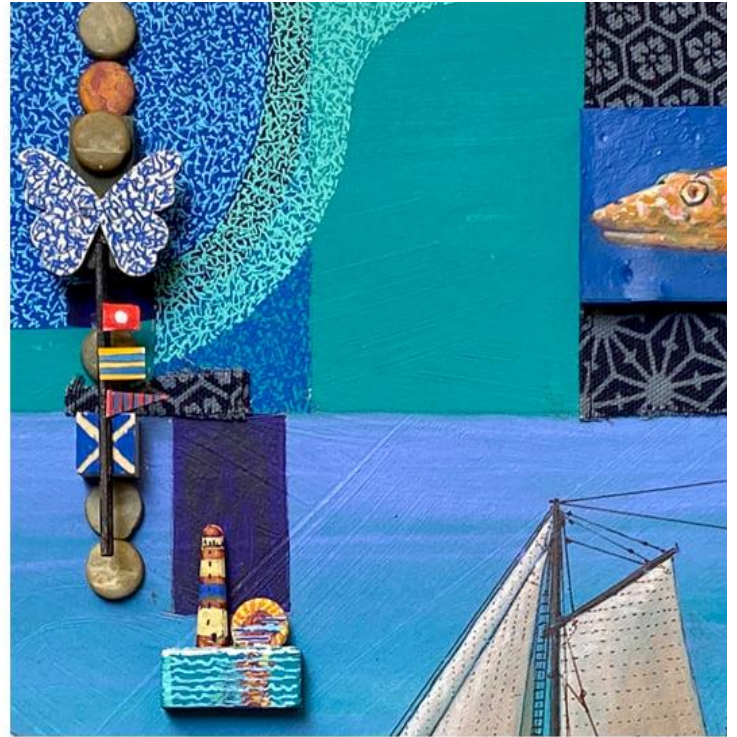
Due to COVID restrictions, only light refreshments will be served during the formal opening in the Gallery.
To book for lunch separately, contact Vasse Felix : P. 9756 5050 or restaurant@vassefelix.com.au

For more information about the exhibition visit : www.holmesacourtgallery.com.au



Vasse Felix
Cnr Tom Cullity Drive & Caves Road, Cowaramup
P. 9756 5000 | Gallery Hours : Daily 10am - 5pm
hacgallery@heytesbury.com.au
vassefelix.com.au

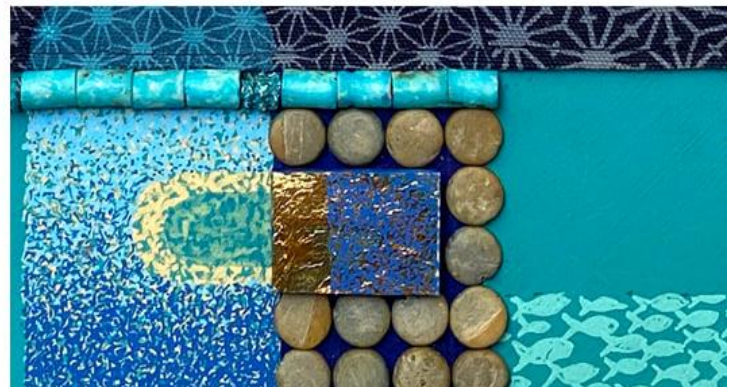
Image: Susanna Castleden, 1-1 Expeditor 1, 2019

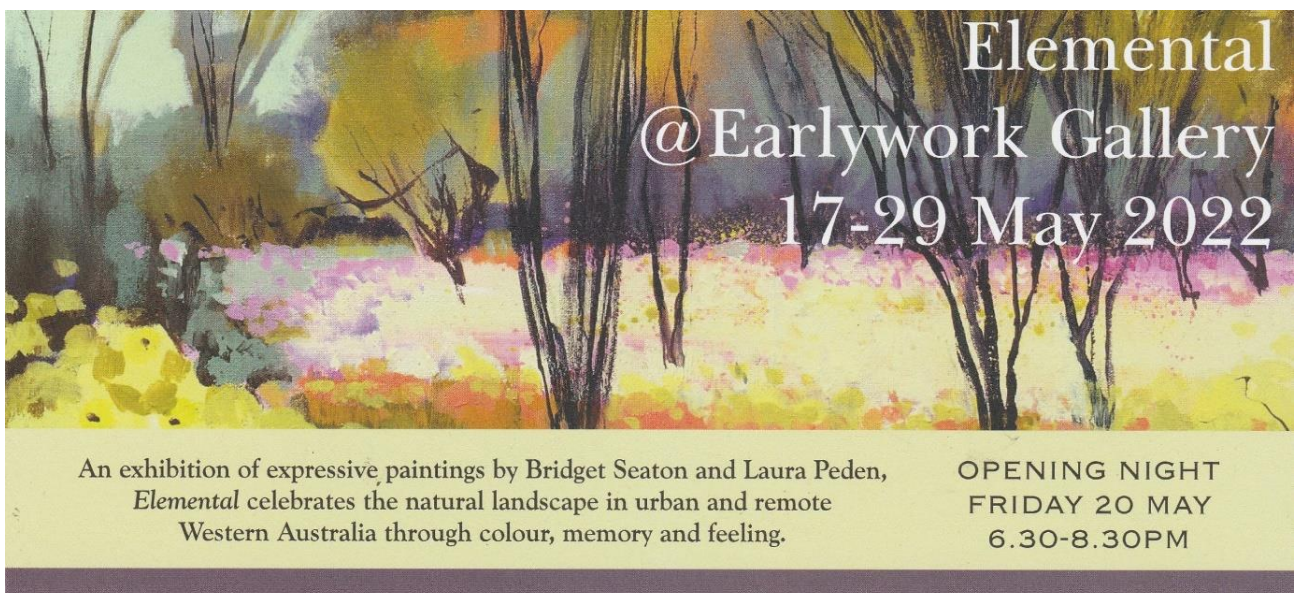
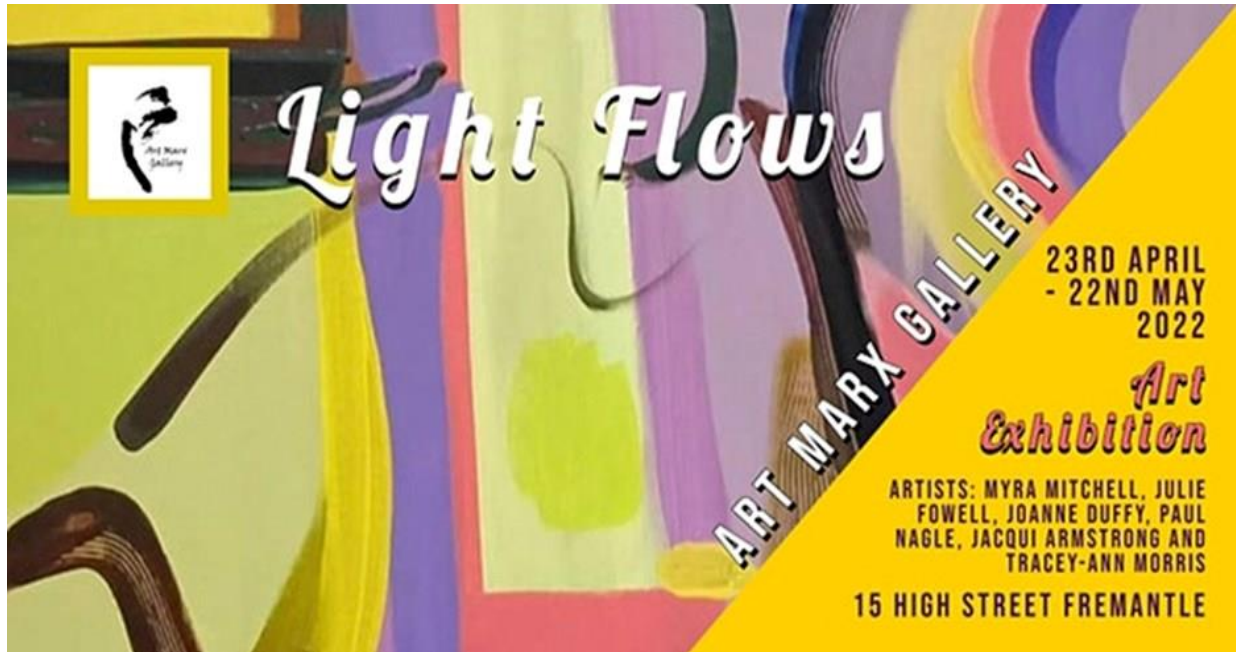


Taming a Tumultuous Palette

new works by Leon Pericles

Linton & Kay Galleries Subiaco May 27 - June 19







Framed *Unframed*

2022 PAWA MEMBERS EXHIBITION

Open July 2nd - 17th

Opening night: July 2nd, 5:00pm-7:00pm
Nyisztor Studio - 391 Canning Hwy, Palmyra

GALLERY OPEN TUESDAY-SATURDAY 11:00AM-5:00PM & SUNDAY 2:00PM-5:00PM

Artist Opportunities

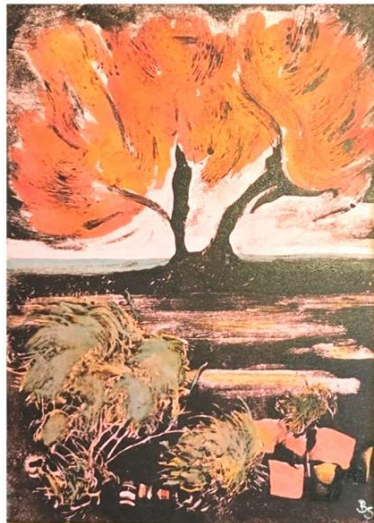
Please go to the websites listed for more information on terms and conditions and to confirm closing dates.

EXPRESSIVE LANDSCAPES PRINTMAKING

with Bridget Seaton

Melville Arts @ Atwell House

This course involves taking a closer look at the landscape through playful printmaking. Take inspiration from the textures and natural forms of the landscape and learn several different printmaking techniques each term which can include: monoprinting, monotype, relief and intaglio printing, artist books and more. All printmaking tools and inks are included in the cost as well the use of a small printing press. BYO paper. Guidance is given and notes are provided on a regular basis. Students are encouraged to find their own voice and explore a subject matter within the landscape that inspires them. This is a fun and experimental class for students of any level.



TUESDAYS 4 WEEKS

31 MAY—21 JUNE 9—11.30 am

MEMBERS \$150 | NON MEMBERS \$175

Bookings: www.melvillearts.com.au

08 9330 2800

Waverley Art Prize 2022

WAVERLEY ART PRIZE 2022

ENTRIES
OPEN
19 FEBRUARY

Open for Entries 19 February 2022

With a main prize of \$15,000, the 2022 Waverley Art Prize is open to painting, drawing, print & mixed media. Entries open 19 February 2022 and close 5pm Friday 13 May 2022

This year's Judges are Daniel Mudie Cunningham (<https://au.linkedin.com/in/daniel-mudie-cunningham-8280a1101>) (Director Programs, Carriageworks (<https://carriageworks.com.au/>)) and Michelle Cawthorn (<https://www.michellecawthorn.com/>) (artist)

ENTER NOW (<https://wwas.org.au/wap-2022>)

Key Dates

- Entries Open: 19 February 2022
- Entries Close: 13 May 2022
- Finalists Announcement: June 2022
- Prize announcements: 1 July 2022
- Exhibition dates: 2 July – 29 August 2022

Each participant will receive 2 prints from 2 different artists

The third print will be displayed in the Mackay region and sold to raise funds for future Printbank Mackay projects



Everlastings, (detail) by Sharyn Egan, 2018 winner of the Shire of Morawa Acquisitive Award.

2022 8th BIENNIAL

Art Awards & Exhibition

THE MORAWA ART AWARDS AND EXHIBITION IS A BIENNIAL EVENT ESTABLISHED IN 2006. THE ART AWARDS BRINGS TOGETHER OUR REGIONAL AND STATE ART COMMUNITY IN SUPPORT OF SHOWING VISUAL ARTS LOCALLY.

ACQUISITIVE AWARD Shire of Morawa Acquisitive Award \$7,500

NON-ACQUISITIVE AWARDS PRIZE

Mid West Indigenous Award \$3,500
Works on Canvas \$1,750
Works on Paper \$1,750
3 Dimensional \$1,750
Indigenous Award \$1,750
Photography - Theme - "Joy" \$900

YOUTH CATEGORIES PRIZE

Youth 13 – 18 years \$500
Young Artists 5 – 12 years \$100

AWARDS VOTED PRIZE

People's Choice Award \$500

\$20,000 IN PRIZES

ENTRIES CLOSE FRIDAY 8TH JULY 2022

EXHIBITION OPENING NIGHT FRIDAY, 5TH AUGUST 2022

ENQUIRIES Emily Sutherland
Left of Centre Concepts and Events
emily.loc@bigpond.com or 0427 426 596



Thanks to our Sponsors

GENERAL:

Future Engineering (printing press)

Phone: 08 9470 3540

Email: info@futureeng.com.au

<http://futureeng.com.au>

morrisonart

Contact: Elizabeth Morrison

morrisonart@outlook.com

Phone: 0448 087082

Rosily Vineyards

Margaret River

www.rosily.com.au

Talison Lithium

www.talisonlithium.com.au

ART SUPPLIES :

Jacksons Drawing Supplies Pty Ltd

www.jacksons.com.au

PAWA members receive a 15% discount

Oxlades Art Supplies

www.oxlades.com.au

PAWA members receive a 15% discount

FRAMING:

Art Framers Gallery (Claremont)

www.artframers.com.au

PAWA members receive a 20% discount

