

PAWA

PRINTMAKERS ASSOCIATION
OF WESTERN AUSTRALIA Inc.



NEWSLETTER: FEBRUARY - MARCH 2017



www.pawa.org.au

2016-2017 COMMITTEE

President

Elizabeth Morrison

Treasurers

James and Pamela Larkins

Secretary

Clare McCarthy

Minutes Secretary

Hilda Klap

Office Coordinators

Rosemary Mostyn

Bethwyn Porter

General Committee

Shelley Cowper

Monique Bosshard-Curby

WELCOME TO NEW MEMBERS

Leanne Bray

Rhonda Breen

Julie Fowell

Bernadette Knight

Derk Luiton

Aline Lutenbacher

Rebecca Palmer

Eveline Ruys

Queenie Thum

Roberta Van Maanen

AND A WARM WELCOME TO OUR RENEWING MEMBERS!

PRESS HIRE

Email: admin@pawa.org.au

\$15 half day / \$25 full day

(first time users to the studio will need to have a 10 minute orientation on site before use)

No email? No problem!

Call us:

Beth 0406 968 731

Rosemary 0403 466 529

CONTACT PAWA

Printmakers Association of WA
P.O. Box 6 Nedlands 6909

Studio: Tresillian Arts Centre,
21 Tyrell St, Nedlands

Email: admin@pawa.org.au



www.facebook.com/Printmakerswa/

If you have written an article, have some printmaking news or want to let the community know about your exhibition please let us know.

Editor - admin@pawa.org.au

CONT

- 4. Housekeeping Notes**
- 6. Studio Notes**
- 7. Japan - By Shelley Cowper**
- 10. PAWA Print Collection**
- 11. Skill Sharing**
- 13. Exhibitions**
- 14. A Printmaking Extravaganza - Beth Porter**
- 16. Artist Books - Clare McCarthy**
- 19. Artist Opportunities**

ENTS

HOUSEKEEPING NOTES

By Elizabeth Morrison

Dear fellow printers,

Again, you will have seen the Call for Submissions I sent out for 26oS 121oE/ On The Map. A survey of contemporary printmaking in WA, to be held at Mundaring Arts Centre 15 Sep 2017 to 15 Oct 2017. This exhibition is being held in conjunction with the launch of the PCA 2017 Print Commission Folio.

Deadline for Submissions: Thursday 1 June 2017.

Please email submissions and any further enquiries to Laura Taylor at laura_a_taylor@yahoo.com or ring Laura 0406 666 164.

We are very excited to be involved with the WA branch of the Print Council of Australia and Mundaring Arts Centre in this project, and are currently beginning to develop a plan for a series of workshops to be held over this period. More on that as our schedule and venues for these workshops are firmed up.



If you you like to run a workshop during that period at a venue still to be determined please email an expression of interest to admin@pawa.org.au. We have had a couple of very talented printmakers offer their services so far.



We can also confirm our Members Exhibition this year will be held at Atwell Gallery in Applecross from the 15th to 23rd July. Entry forms will be available closer to the date. Get printing though, as our last exhibition and opening at Atwell was fantastic. It really is a lovely venue.

Our very successful and fun skill sharing Saturday mornings will also continue on the first Saturday of the Month, all are welcome. Occasionally we alter our skill share Saturday date to accommodate one of the exciting print workshops run by the Tresillian Art Centre. On Mar 4th and 18th it has been Elmar Steyn utilizing our beautiful studio and presses to show some of the finer points of copperplate etching.

Our March skill share on the 11th coincided with the election and Tresillian being a polling booth. It was exciting to have so many people coming through to both see the current Tresillian pop up exhibition and browse through the open studios.

Our next skill share is Sat April 1st when we will have mirrors available so that you can do a monoprint self portrait.

If you made a carborundum plate on 11th March you may also like to print it on April 1st. Bring an old toothbrush which can help with the inking process of thickly applied carborundum.

You are also welcome to bring projects, books and any other items of interest to share. Please bring something to share for morning tea/lunch and wear closed in shoes.

The cost is \$15 per skill share, it's a great way to learn about print in a social and fun way. At each skill share we will also be giving instruction in the correct usage of our presses and general studio protocol. Proofing papers and inks are provided. Bring some morning tea/lunch to share. We also have some BFK Rives paper available at \$7 per sheet.

If you have a specific topic you would like covered or would like to present please email admin@pawa.org.au Subject SKILLSHARE.

I am grateful for the incredible teamwork I see around me daily from PAWA members. Please keep sending to admin@pawa.org.au Subject NEWSLETTER tips, articles, pics etc. of the exciting things you have been doing so that we can all enjoy your success. Our web page www.pawa.org.au has a calender you can refer to to see all we have planned for the very exciting year ahead.

Elizabeth Morrison
President.

THANK YOU TO OUR SPONSORS



**FUTURE
ENGINEERING**

CLAREMONT

ART FRAMERS GALLERY



OXLADES
ESTABLISHED 1894
What's Different About Us? Our Generation.



JACKSONS
DRAWING SUPPLIES PTY LTD

white room
FRAMING STUDIOS



STUDIO NOTES

By Rosemary & Beth

Reminder to all members our studio at Tresillian is available to hire at \$15 half day or \$25 full day 7 days a week by emailing admin@pawa.org.au for a booking or contacting Studio Coordinators Rosemary 0403 466 529 or Beth 0406 968 731. A brief induction/orientation on studio procedure is required for new members.

Don't forget to sign in/sign out at the Tresillian reception.

Also please sign the book in the studio and leave payment in an envelope (found in front of the book) in the Treasurers tray on the small file cupboard near the large press.

A recent busy bee and general cleanup has resulted in a more efficient working space. Inks and tools etc. have been rearranged on the shelves while the rollers now hang on a wall rack (with thanks to Marcus). A wire hanging system for drying prints will be erected soon. Meanwhile, a plastic clothes airer and pegs are a temporary solution.

BFK Rives paper (56cmx76cm) has been kindly donated by past member Ann Land. Tiepolo paper (56cmx76cm) is also available. Both are for sale \$7.00 per sheet. Acrylic polymer sheeting for drypoint/collagraph and drafting film are also available. Prices to be advised.

Many thanks to Beth who has professionally labelled and photographed our PAWA print collection which has now been placed in a large A1 folio donated by Ann Land. The folio will soon be available for members to view in the studio.

If printmaking related books interest you, we have plenty in our library for you to borrow. Please sign/date the book on the bookshelf.

Another gentle reminder to please ALWAYS loosen the press rollers leaving a min 3cm gap between roller and press bed, spread the press blanket over the rollers to air and cover the press with the old checked blanket.

PLEASE leave studio tidy for the next person...i.e. clean rollers, glass inking areas, rubbish, recycling etc.

Thank you and happy printing everyone!!

MEMBERS NEWS

from Peter Lowe

This link may be useful to members with questions on materials and conversation:
<https://www.artcons.udel.edu/mitra/forums/question?QID=50>

JAPAN

By Shelley Cowper

I have just had a visit to Japan with fellow artist Michelle Bourne. We were only there for five days but it was action packed as we were fortunate to have a friend there. We stayed 2 nights with Mikaido, an opera singer with the Japanese Opera. She also has an art gallery, Gallery Opera Labo where we will be exhibiting some works on paper next month and a space in her apartment building where we had a small show of works while we were there. Mikaido has a penthouse apartment on the 34th floor overlooking Kobe which houses a baby grand piano and there is a constant flow of piano and singing students through the door. There are more visitors dropping in the evening and it reminded me of the old salons in Paris where artists and musicians used to gather and come and go. We were very lucky to be treated to a private performance of an aria from Puccini.



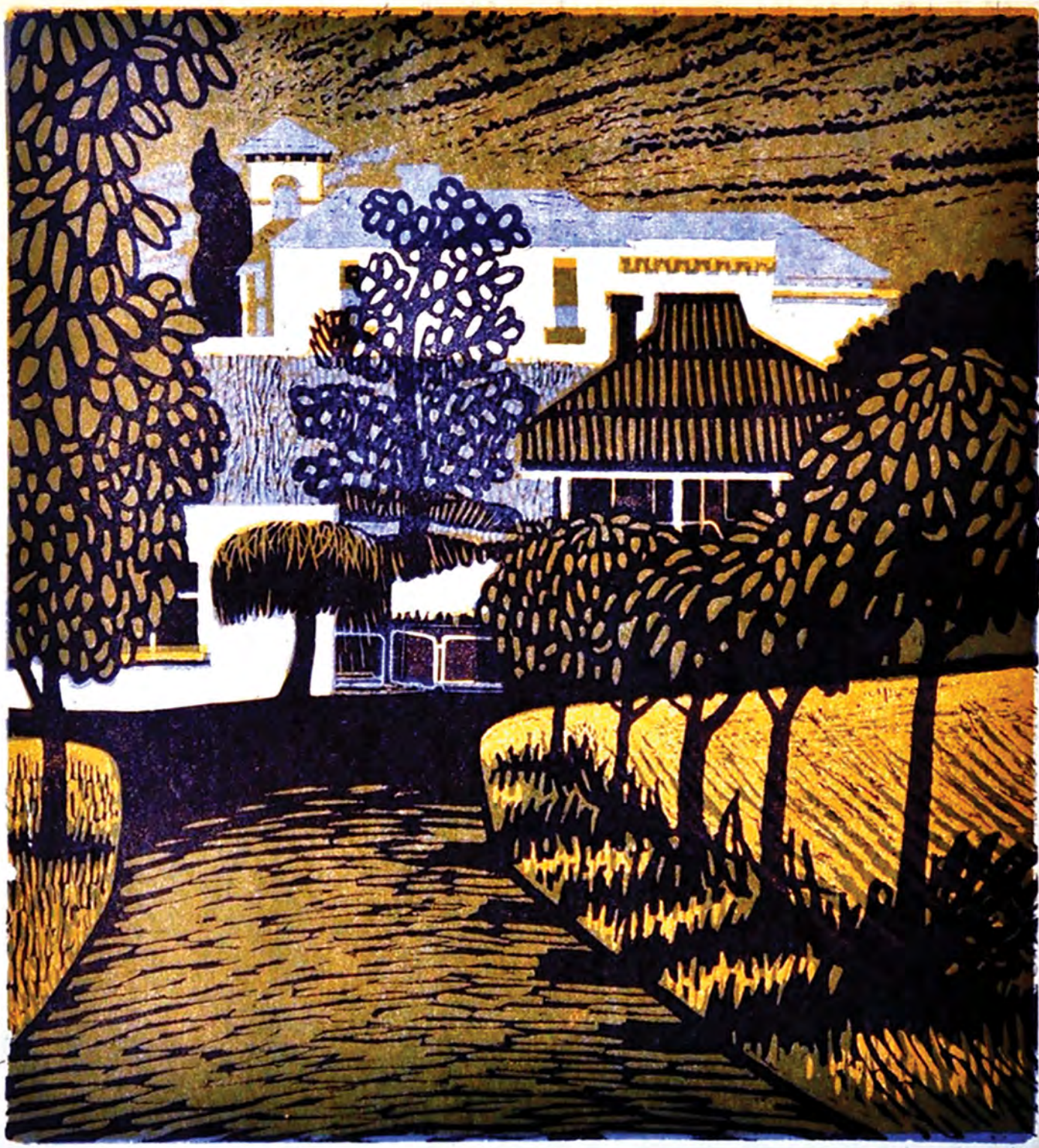
Other highlights included a night with a lady who had 11 cats rescued from the streets (so we didn't need to visit a cat cafe which are very popular in Japan) and a visit to the Art gallery and Museum in Kobe. The art gallery was showing an excellent sculpture exhibition with quite a few Rodins, Henry Moores, and a Barbara Hepworth among many other famous artists. 2D works included four unusual screenprints by Christo of his wrapped buildings which we were not allowed to photograph. One of them was 3 dimensional as he had 'wrapped' the building in paper. Although I couldn't locate those particular screen prints if you google Christo prints you will see some examples of his works on paper available from international galleries (at a very expensive price of course!)



We managed to squeeze in a few touristy things: a rickshaw ride, temples, a Japanese bath (wonderful as it was only 2 degrees) lots of fine food and a night in a traditional hotel in Kyoto with futons and cushions on the floor. Apparently it is very rare to sight a real geisha so these 'gheisha's' I photographed walking around Kyoto would be specially for the tourists. We also paid a visit to an Ukiyo-e art shop that has traditional original woodcut prints. There were so many prints to choose from including the '100 aspects of the moon' series by very famous artist, Yoshitoshi, but unfortunately out of my price range. The prints are guaranteed with a certificate of authenticity so I finally decided on this one by an artist who worked between 1786 and 1874. Now I just need to frame it. Japan is a great country to tour and I hope to return in the not too distant future.



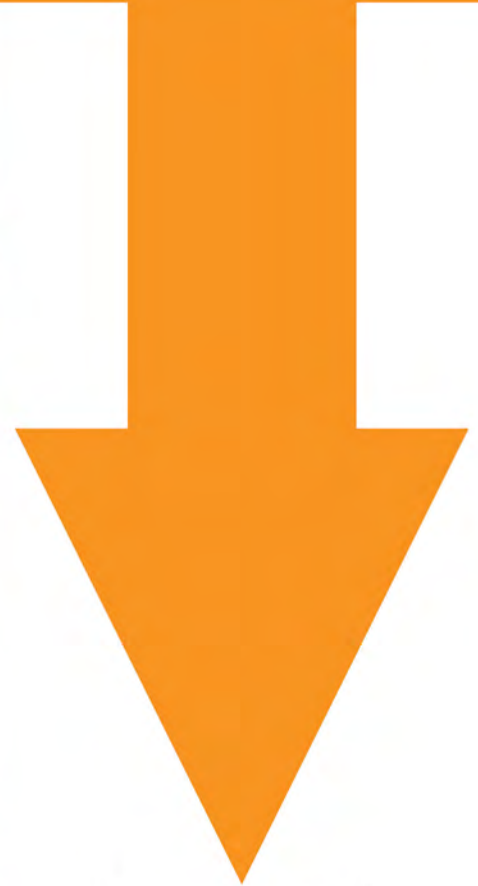




"The White House" by Mary Dortch.

In each issue of our newsletters, we would like to feature a print from the PAWA Print Collection. Here is a print titled The White House by Mary Dortch. It was printed in 1974, ed no. 7/7 and described as 'lino-cut in violet, yellow ochre and maroon'. The edition was printed on some lovely pieces of mulberry paper. We look forward to bringing you another treasure from our collection in the next edition.

SKILL SHARE



Our next skill share is Saturday April 1st when we will have mirrors available so that you can do a monoprint self portrait.

Feel free to bring your own projects as well.

Bring \$15, lunch., wear closed in shoes.

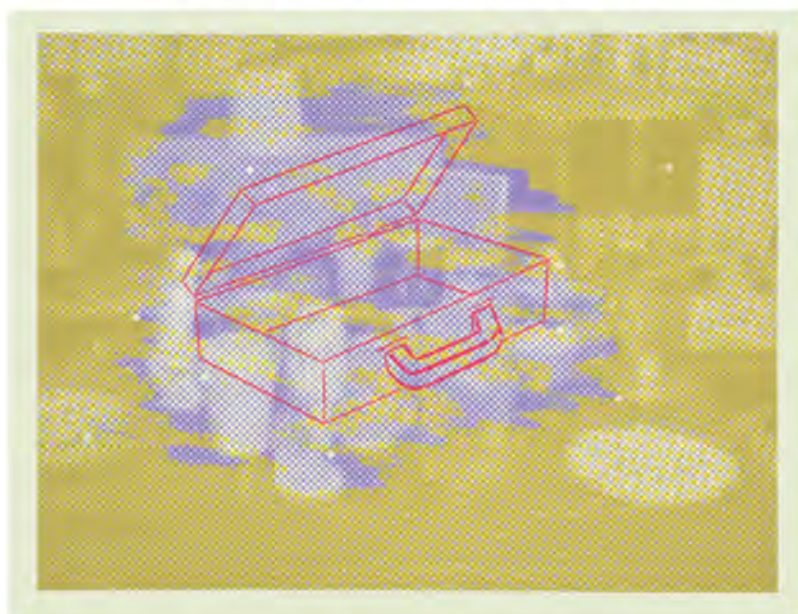
Some inks and papers available, carboruundum and card will be provided.

Arches paper available for only \$7.

See you there

PAUL COLDWELL

Small Traces



Solo Exhibition part of our public program for 2017
Edith Cowan University 2 Bradford St Mount Lawley Perth

Exhibition dates: 23rd March - 18th April 2017

Opening event: 27th March 2016 5pm - 7pm

Venue: Gallery 25 Building 10.122

Symposium: Forming and Deforming Images
- the creative process in *flux*
27th March 2016 9.30am - 4pm



Keynote speaker: Paul Coldwell

Contact: Paul Uhlmann

p.uhlmann@ecu.edu.au



GALLERY 25

EXHIBITIONS

ARTISTS BOOKS 2017 “BETWEEN THE SHEETS”

Presented by Gallery East Directors David Forrest & Janis Nedela
78 Works by 61 Australian & International Artists from 9 countries

Opens 6pm Friday 17 March 2017
Continues 18 March – 8 April
Mon-Frid: 10am-4.45pm: Sat 12noon-4pm
North Metro TAFE
12 Aberdeen St, Perth
Enquiries: www.galleryeast.com
Online viewing: www.galleryeast.com.au/general/books2017/main.htm

SKIN, FLESH, CORE: A STUDY OF FRUIT AND THE HUMAN BODY BY ANNA COCKS.

Following on from her recent solo exhibition, Dedications: Remedies, Anna Cocks continues her exploration of plant-based remedies, this time focusing on fruit and its many relationships to the human body. The exhibition will draw on a diverse range of influences and inspirations, from personal associations, memories and experiences, the use of fruit in remedies and folk healing, the cultural and symbolic significance of certain fruit and its transformative capacity for fermentation. Using a combination of printmaking and ceramics, and engaging the body on different sensory levels, Skin, Flesh, Core is a celebration of fruit, from the sensual to the cellular, and its vital connection to the human body.

Opening night 21st April, 6-8pm. exhibition runs until 7th May open daily.
Gallery 6, upstairs at the Moores Building, 46 Henry st Fremantle.



Image detail: “Tangerine Fairy” (detail from artwork “Zendocrine” (2016), collograph, monoprint, chine-colle and ink on paper, 112x 77 cm)

A PRINTMAKING EXTRAVAGANZA

Beth Porter

*"The Midwest Community will come together to print giant woodcuts with a steamroller on the Geraldton foreshore"...*this is how Lizzy Robinson, project co-ordinator, summed up the proposal pitched to the City of Greater Geraldton for Festivals on the Foreshore. The idea began in 2015, and started taking shape during 2016 when Lizzy, and a growing group of artists and community members began participating in printmaking workshops and experiencing printmaking as an exciting way to complement their regular art practice. With the help of Helen Clarke, a well known mid-west printmaker, the print day arrived on October 6th, 2016.

Lizzy said *"the only thing I under-estimated was how much freaking fun it all was!"*, as she described the event, in the exhibition catalogue produced later. With a two tonne Double Drum Road Roller(from Coates Hire) and dozens of wood-cuts...prepared and ready to print, the excitement lasted the entire day, making everyone's back breaking work and hand callouses worthwhile. Finally, over twelve large scale prints and 2 collective works made up from 16 smaller woodcuts (300mm square) were rolled over, with an enthusiastic response. Besides the 12 large editioned works the exhibition included one by a mother and daughter, one by Helen Clarke, a large scale piece jointly carved by 40 workshop participants and a printed pair of jeans!!



Following the big day, DADAA invited the works to be exhibited in Fremantle and were shown in "Hard Pressed- An experimental community arts venture into printing BIG!" between the 3rd and the 17th of February 2017. The exhibition included some photographs of the big day by Eva Svanberg which showed the road roller in action, rolling over the 106cmX136cm sheets of print paper on top of the 900X1200mm inked woodblocks!

If you missed seeing the exhibition...you may wish to view 'hard pressed' on face book @hardpressedwa One of my favourite works on display was called *"Fifteen Fathoms above Home Reef"* by Kelli Dawson. She took a whimsical approach to her piece, referencing the marine environment on several levels. Kelli has a video on her facebook page of 'Hard Pressed Geraldton' or go to her website <http://www.kellidawson.com>.

"The only thing I under-estimated was how much freaking fun it all was!"

Her work is pictured here (with her kind permission) and thank you to Christopher Williams, creative producer at DADAA for allowing me to photograph Kelli's work for our Newsletter. You may still get the chance to see some of this exciting print making in action as they're planning to keep this process going for quite some time! Equiries; Lizzy Robinson erjrobinson@gmail.com.



ART BOOKS

Text and Drawings by Clare McCarthy



*Interesting prints often start with interesting drawings.
These books might help spark something new in your own drawings and prints.*

Drawing on the Right Side of the Brain

By Betty Edwards 4th edition (London, Penguin, 2012)

ISBN: 9781585429202

A new edition of this well-known book came out in 2012. It aims to give you greater confidence in your drawing ability and deepen your artistic perception, as well as foster a new appreciation of the world around you. The drawing exercises can help shift your drawings into unexplored areas.

“...learning to draw means learning how to make a mental shift from L-mode to R-mode. That is what a person trained in drawing does, and this ability to shift thinking modes at will has important implications for thinking in general and for creative problem solving in particular” quote from her website

About the Author:

Betty Edwards is art teacher and author. An artist from an early age, she also has a Doctorate in Art, Education, and Psychology from the University of California, LA. As a Professor of Art, she taught and conducted research exploring the brain and creativity. See www.drawright.com

Drawing 365 : Tips and Techniques to Build Your Confidence and Skills

By Katherine Tyrrell (Cincinnati, North Light books, 2015)

ISBN: 9781440336584

Drawing 365 presents a comprehensive art course in bite-sized chunks so it's easy to dip in to. Open it daily to find a new tip, idea, technique or challenge...all aimed at getting you into good drawing habits. The content is well designed covering techniques, materials and subjects to draw.

For beginning artists as well as practicing artists wishing to push their work to the next level, this guide focuses on building skills and gaining confidence so that drawing is rewarding and fun.

"Drawing is absolutely no different from anything else in life. 1. There is no "get rich quick" solution. 2. You get out what you put in." Katherine Tyrrell

About the author:

Katherine Tyrrell shares tips, reviews and resources nearly every day on her popular art blog "Making a Mark" (#3 art blog in UK). Katherine is a founding member of Urban Sketchers London. For more see



Contemporary Drawing : from the 1960s to now

By Katherine Stout (London: Tate Publishing, 2014)

ISBN: 1854379704

The radical shift in the treatment and development of drawing since the 1960s has resulted in a renewed status and relevance for it within current practice.

Including work by artists such as Ellsworth Kelly, Agnes Martin, Richard Serra, Philip Guston, Claes Oldenburg, Len Lye and Richard Long, the book explores how practitioners have addressed and redefined notions of medium specificity in relation to drawing, and how it has been particularly significant for artists pursuing an interdisciplinary practice.

Katharine Stout contextualises the medium within history and with the current treatment of drawing by theoreticians, institutions, the art market, and education systems, concluding that drawing is a popular, diverse and ever evolving medium.

About the Author:

Katharine Stout is Head of Programmes at the Institute of Contemporary Arts, London, and Associate Director at The Drawing Room which is dedicated to the investigation and presentation of international contemporary drawing. See www.drawingroom.org.uk

ITALIAN MADE ETCHING PRESSES



CIMA 3640

42cm
+ blanket
+ plate
Code: 124495
x3 available only

~~WAS: \$1,746.00~~
NOW: \$1,485.00



WHILE STOCKS LAST

CIMA 3650

51.8cm stand
+ blanket
Code: 124496
x1 available only

~~WAS: \$2,051.75~~
NOW: \$1,400.00



WHILE STOCKS LAST

CIMA 3630

31.5cm
+ blanket
+ stand
Code: 126562
x4 available only

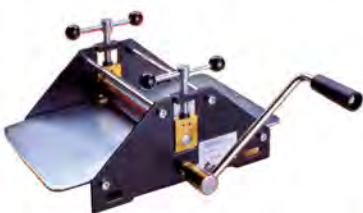
~~WAS: \$1,733.50~~
NOW: \$1,320.00



CIMA 3656

52cm stand with rack feed
+ blanket
Code: 125823
x1 available only

~~WAS: \$2,282.89~~
NOW: \$2,090.00



CIMA 3620

18.6cm
+ blanket
+ plate
Code: 124493
x7 available only

~~WAS: \$317.25~~
NOW: \$275.00



WHILE STOCKS LAST

CIMA 3636

31.5cm Desktop press
+ blanket
Code: 124494
x3 available only

~~WAS: \$1,993.51~~
NOW: \$1,320.00

All prices are including GST

PICK UP only available from Balcatta warehouse.

Valid 1st Feb - 28th Feb 2017

JACKSONS

ARTIST OPPORTUNITIES

PAWA MEMBERS EXHIBITION 2017

Atwell Gallery
586 Canning Highway, Alfred Cove, WA 6154
15 July- 23 July
Entries close: Friday 30 June
Opening: Sunday 16 July 4 – 6pm
PAWA Members can enter 3 prints (framed).
Entry forms coming soon.
Entries due: Friday 30 June

BEVERLEY ART PRIZE 2017

Thursday 13 April – Monday 17 April
Beverley Station Arts presents the 49th Annual Exhibition open to all West Australian artists.
Over \$13,000 in prizes including a Printmaking Award \$1,000
Entries Close: Friday 17 March
www.beverleywa.com/directories/art-entry-form-17pdf
Enquiries: Jenny Broun 0419 040 063/ brounj@westnet.com.au

2017 CITY OF WANNEROO COMMUNITY ART AWARDS

14 May – 11 June 2017
Artists from Western Australia are invited to enter works and be in the running for \$16,800 worth of prizes.
Entries open: from Monday 13 Feb until 230 valid entries received
Entries close: Friday 7 April 4pm
wanneroo.wa.gov.au/artawards
Enquiries: arts@wanneroo.wa.gov.au

MOKUHANGA JAPANESE WOODBLOCK EXHIBITION

31 MAY – 17 JUNE
To be held at Firestation Print Studio, Armadale, Melbourne (Vic)
Open to all Australian artists
Medium: Mokuhanga technique only
Entries close: Friday 21 April
Enquiries: www.mokunhanga-school.com.au

MID WEST ART PRIZE AWARDS 2017

Opening 16 June

Open to all Western Australian artists with more than \$30,000 in sponsored prize money across a number of award categories.

Entries close: Monday 1 May

Enquiries: <https://artgallery.cgg.wa.gov.au/mid-west-art-prize.aspx>

2017 ALCOA/PINJARRA ART EXHIBITION & SALE

Sponsors : Alcoa & Rotary Club of Pinjarra

2-5 JUNE 2017

Open to all WA artists

Entries close : Friday 5 May

Entry Form & Enquiries :

margaret_mccormack@me.com

or Maria Sanders 9537 7757

GIPPSLAND PRINT AWARD 2017

(Gippsland Art Gallery, Sale, Victoria)

2-19 NOVEMBER 2017

Open to any artist living/working in Australia

Entry form, delivery artworks, payment etc. to arrive at the Gallery from Monday 20 February to Closing

Date: 5pm Friday 18 August

Entry forms: www.gippslandartgallery.com

3RD ANIMALIA EXCHANGE EXHIBITION 2017

August 2017

International Print Exchange coordinated by Printmaking Sisters

Proceeds of sales pledged to World Animal Protection

THEME:

The animal kingdom/ taxonomic kingdom, comprising all living or extinct animals incl. sponges, worms, insects, fish, amphibians, reptiles, birds and mammals.

Entries close: Tuesday 18 August

www.annieday.com

Enquiries: robin@annieday.com.au

(INTERNATIONAL) AIMPE 2017

Artists are invited to submit their miniprints created on Japanese washi paper for the AWAGAMI INTERNATIONAL MINIATURE PRINT EXHIBITION 2017.

Prize money up to \$10,000 (US) plus Washi paper awards

Registration/Submissions open: 1 May

First 300 artists registered by 31 May will receive free sample pack of wash paper for printmaking.

Deadline: 31 July 2017

CITY OF GOSNELLS COMMUNITY ART AWARDS 2017

5-12 May 2017

The Agonis (Gosnells Town Centre)

2232 Albany Highway, Gosnells.

Open to all West Australian emerging and professional artists

Cash prize \$5,000 for Overall Award (Acquisitive)

Cash prize \$500

Entries Close: 4pm Monday 3 April 2017

Enquiries: City of Gosnells

www.gosnells.wa.gov.au

NEWSLETTER DEADLINE

Please send newsletter items in Word doc by 20th of each 2nd month.

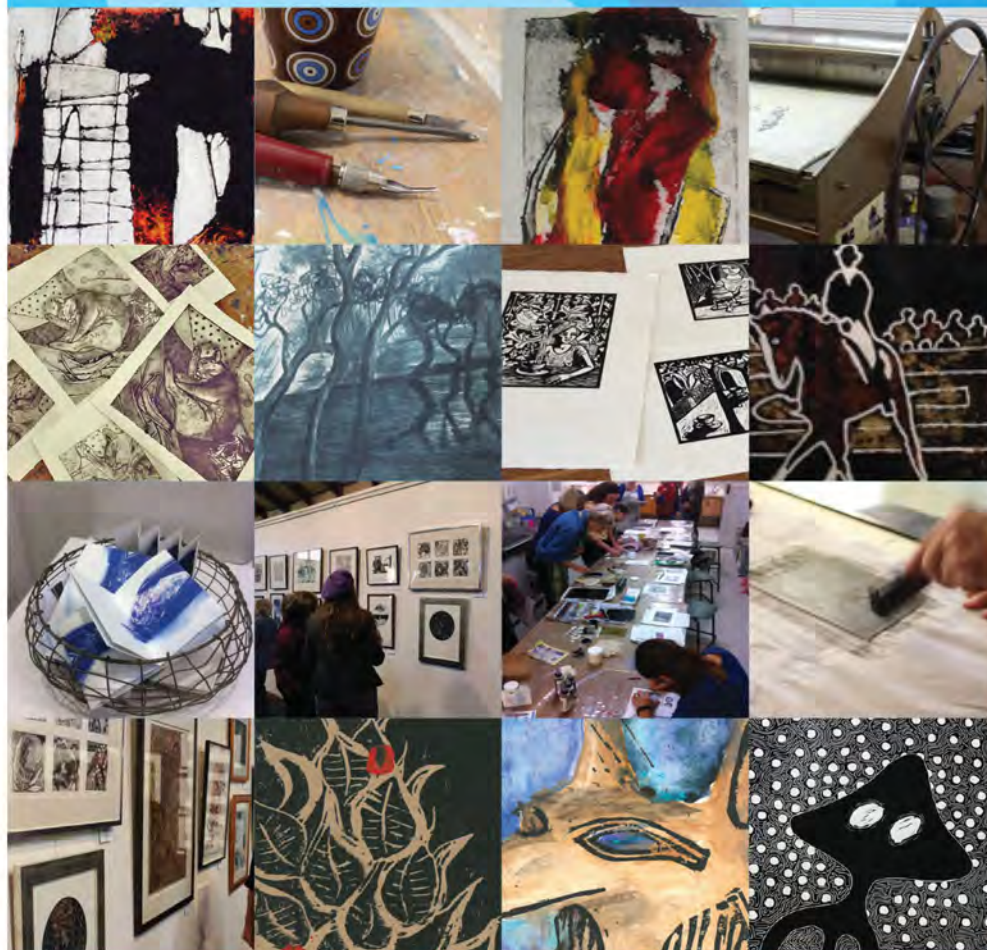
Next Deadline: 20 April for April/May newsletter



PRINTMAKERS ASSOCIATION
OF WESTERN AUSTRALIA Inc.



PRINTMAKERS ASSOCIATION
OF WESTERN AUSTRALIA Inc.



Enjoy the support of a dedicated group of
printmakers to learn new skills, develop
techniques, exhibit and network.

We also have skill sharing sessions, press hire,
workshops and a monthly newsletter.

www.pawa.org.au

Printmakers Association of Western Australia
Tresillian Arts Centre, 21 Tyrell St, Nedlands 6009
Email: admin@pawa.org.au